

# **FRAP**

**PARTI PER AUTOVEICOLI**

**AUTOMOTIVE COMPONENTS**

**CATALOGO TECNICO**  
**III edizione**

**TECHNICAL CATALOGUE**

**III edition**

---

Via Volvera, 112 - 10090 BRUINO Z.I. (TO) - ITALIA

Tel. +39 011 9048489 - FAX +39 011 9048492

Internet: [www.frap-oem.com](http://www.frap-oem.com) - E-mail: [info@frap-oem.com](mailto:info@frap-oem.com)

**I dati e le tipologie di snodo illustrati rappresentano solo un estratto della produzione FRAP.**

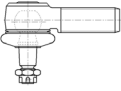
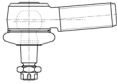
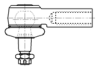
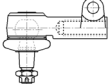
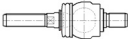
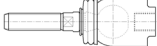

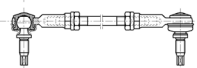


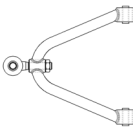
***The data and the typology of the listed items are only an extract of FRAP' s production.***

Le informazioni qui contenute si devono ritenere non impegnative e la FRAP si riserva il diritto di modificarle senza preavviso.

*The herewith given information is not be considered as bindings. FRAP reserves the right to modify and alter this information without any notice.*

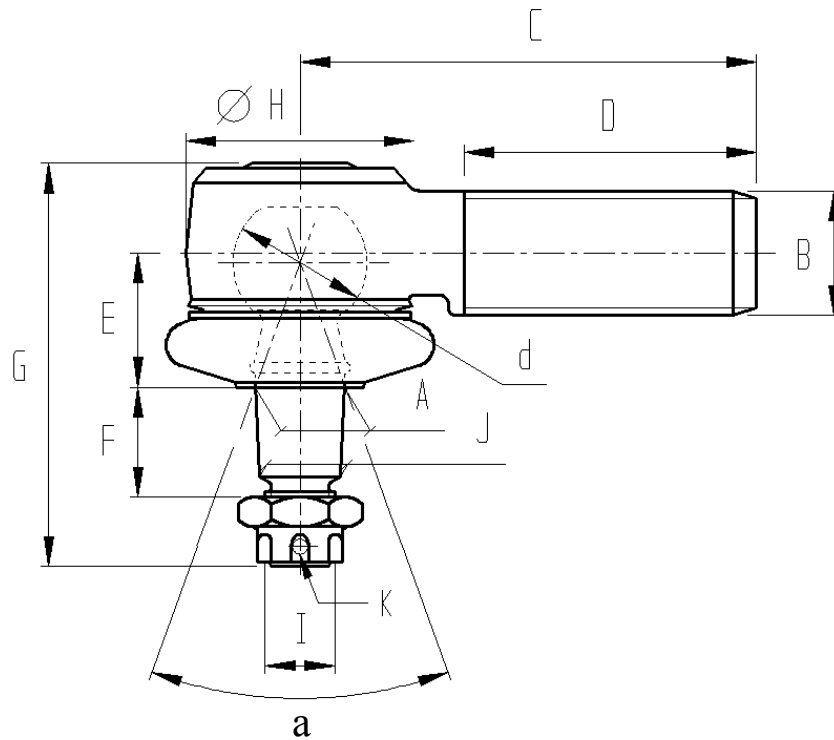
# INDICE - INDEX

## Snodi sferici e tiranti - Ball joints and links

	<i>Teste sterzo maschio Male tie rod ends</i>	<i>Pag. 1</i>
	<i>Teste sterzo maschio inclinate Bended male tie rod ends</i>	<i>Pag. 12</i>
	<i>Teste sterzo femmina Female tie rod ends</i>	<i>Pag. 15</i>
	<i>Teste sterzo femmina con bullone Female tie rod ends with bolt</i>	<i>Pag. 25</i>
	<i>Snodi assiali maschio Axial ball joints (male)</i>	<i>Pag. 26</i>
	<i>Snodi assiali femmina Axial ball joints (female)</i>	<i>Pag. 32</i>
	<i>Tiranti barra antirollio Stabilizer links</i>	<i>Pag. 33</i>
	<i>Tiranti con snodi FRAP 1495 / 1496 Links with FRAP joints 1495 / 1496</i>	<i>Pag. 35</i>
	<i>Tiranti con snodi DIN 71802 Links with joints DIN 71802</i>	<i>Pag. 36</i>
	<i>Snodi piantati Pressed ball joints</i>	<i>Pag. 37</i>
	<i>Produzione varia (esempi) Various articles (examples)</i>	<i>Pag. 40</i>

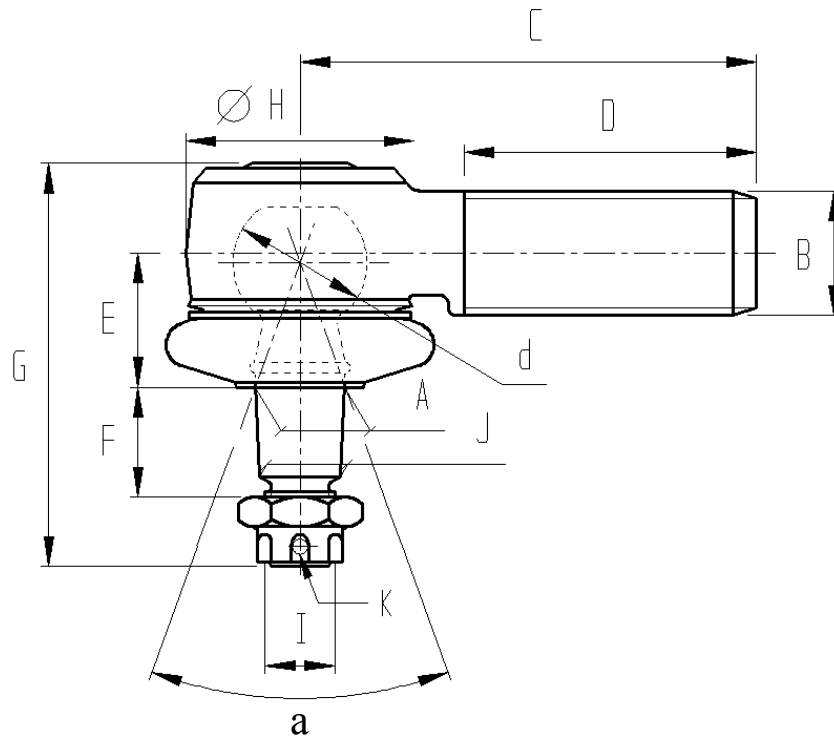
# FRAP

# FRAP *Teste sterzo maschio - Male tie rod ends*



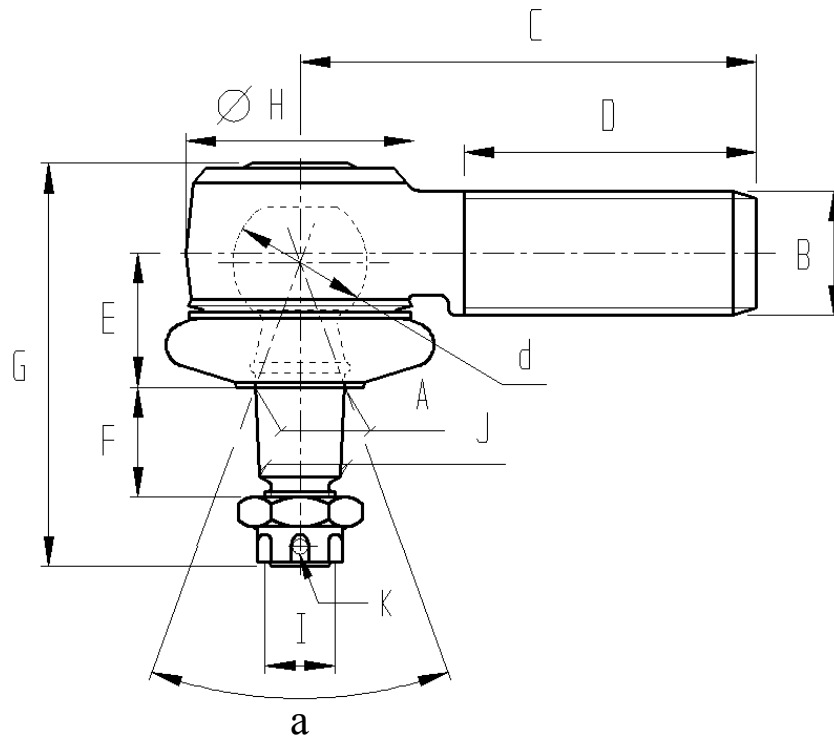
RIF. FRAP	2784	2787	576	963	329
<b>dxa</b>	18x58°	18x58°	19x25°	19x50°	22x25°
<b>A</b>	12 / 1:6	12 / 1:6	12 / 1:10	12 / 1:10	16 / 1:10
<b>B</b>	10x1,25	12x1,25	14x1,5	12x1,5	16x1,5
<b>C</b>	60	60	85	85 (962: 91)	90
<b>D</b>	30	30	45	50 (962: 57)	50
<b>E</b>	16,5	16,5	18,5	21	22
<b>F</b>	10	10	15	20	20
<b>G</b>	54	54	58	64	70
<b>H</b>	30	30	32	32	36
<b>I</b>	10x1,25	10x1,25	10x1	10x1	12x1,5
<b>J</b>	10,8	10,8	10,8	10,75	14,4
<b>K</b>	dado a corona/slotted nut	dado a corona/slotted nut	dado a corona/slotted nut	dado autobl./locking nut	dado a corona/slotted nut
<b>TEMPRA Sfera/Cono HARDENING Sphere/ Cone</b>	-/-	-/-	-/-	-/-	-/-
<b>RIF. FRAP Snodo fil sinistro Left hand thread</b>	<b>2785</b>	<b>2788</b>		<b>962 (2435)</b>	

# FRAP *Teste sterzo maschio - Male tie rod ends*



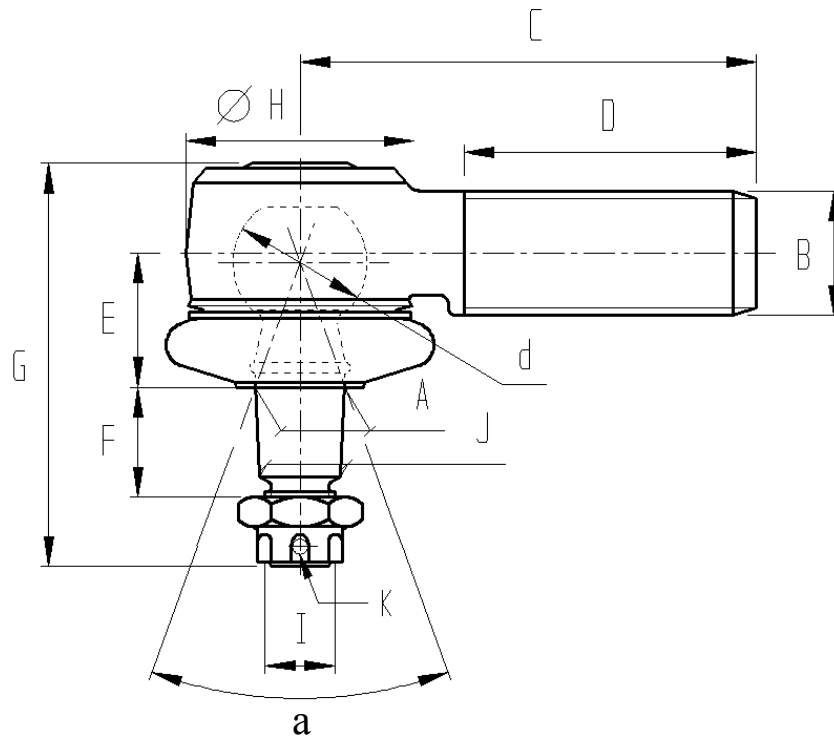
RIF. FRAP	331	511	1222	2443	2862
<b>dxa</b>	22x35°	22x35°	22x42°	22x60°	22x60°
<b>A</b>	13 / 1:10	14 / 1:10	14 / 1:8	13 / 1:8	14 / 1:10
<b>B</b>	14x1	14x1,5	16x1,5	16x1,5	16x1,5
<b>C</b>	76	92	91	86	86
<b>D</b>	46	52	53	60	60
<b>E</b>	20,5	22	20,5	22	24
<b>F</b>	13,5	18	17	13	17
<b>G</b>	61	69	64	65	65
<b>H</b>	38	36	36	36	36
<b>I</b>	10x1,25	10x1	12x1,25	10x1,25	10x1
<b>J</b>	12,05	12,6	12,5	11,45	12,6
<b>K</b>	dado autobl./locking nut	dado a corona/slotted nut	dado a corona/slotted nut	dado a corona/slotted nut	dado a corona/slotted nut
<b>TEMPRA Sfera/Cono HARDENING Sphere/ Cone</b>	-/-	-/-	-/-	-/-	-/-
<b>RIF. FRAP Snodo fil sinistro Left hand thread</b>	<b>24</b>	<b>512</b>	<b>1516</b>		

# FRAP *Teste sterzo maschio - Male tie rod ends*



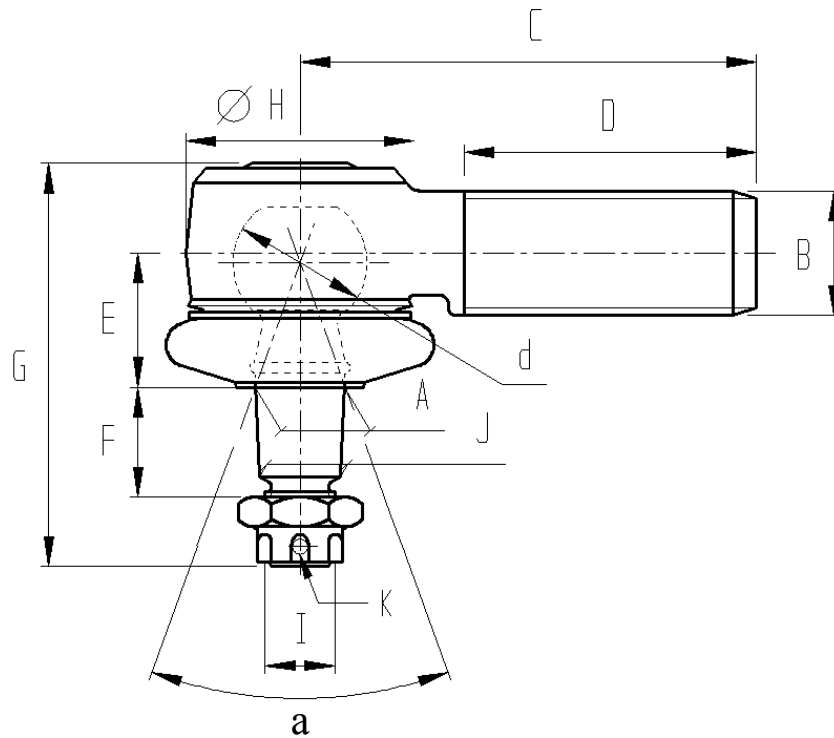
RIF. FRAP	135	717	1327	1133	1135
<b>dxa</b>	22x55°	22x56°	22x12°	24x35°	24x40°
<b>A</b>	14 / 1:10	13 / 1:10	18 / 1:10	18 / 1:10	16 / 1:10
<b>B</b>	14x1,5	14x1,5	20x1,5	18x1,5	18x1,5
<b>C</b>	91	100	90	95	95
<b>D</b>	52	57	65	62	62
<b>E</b>	22,5	21	20	23	24
<b>F</b>	17	20	22	22	20
<b>G</b>	65	66	74	76	74
<b>H</b>	36	39	36	40	40
<b>I</b>	10x1,25	10x1,25	14x1,5	14x1,5	12x1,5
<b>J</b>	12,6	11,95	16,2	16,2	14,4
<b>K</b>	dado autobl./locking nut	dado autobl./locking nut	dado a corona/slotted nut	dado a corona/slotted nut	dado a corona/slotted nut
<b>TEMPRA Sfera/Cono HARDENING Sphere/ Cone</b>	-/-	-/-	-/-	S/C	S/-
<b>RIF. FRAP Snodo fil sinistro Left hand thread</b>	<b>1013</b>			<b>1134</b>	<b>1136</b>

# FRAP *Teste sterzo maschio - Male tie rod ends*



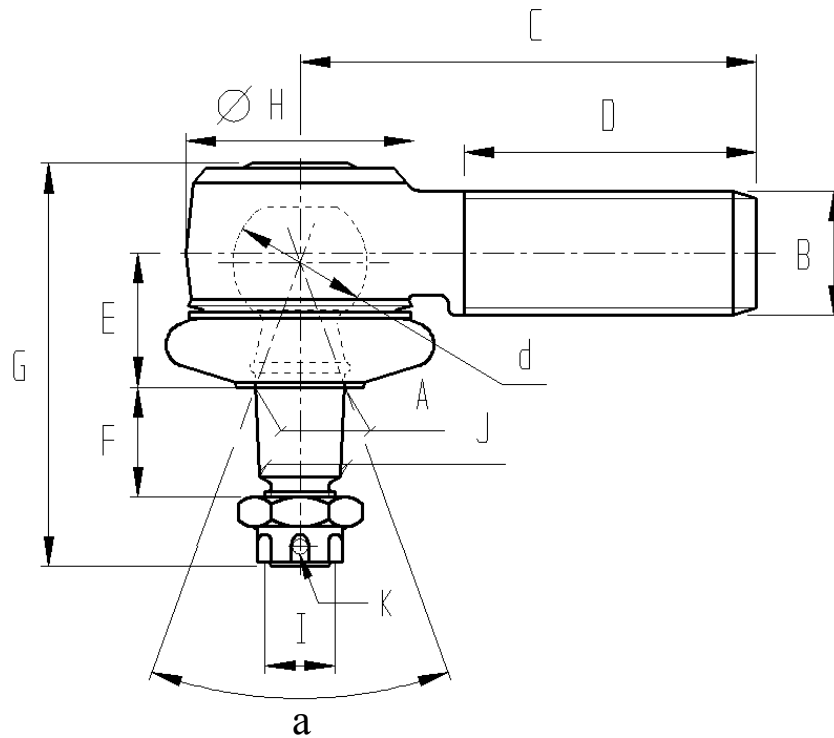
RIF. FRAP	2889	25	1405	84	2411
<b>dxa</b>	24x48°	25x25°	25x38°	25x40°	25x38°
<b>A</b>	18 / 1:10	16 / 1:8	20 / 1:10	18 / 1:10	16 / 1:6
<b>B</b>	20x1,5	14x1,5	20x1,5	18x1,5	18x1,5
<b>C</b>	99	87	90	95	95
<b>D</b>	72	63	55	57	62
<b>E</b>	23	23,5	26	25	28
<b>F</b>	22	20	22	22	17
<b>G</b>	78	76	80	77	76
<b>H</b>	40	39	39	39	39
<b>I</b>	14x1,5	12x1,5	16x1,5	14x1,5	12x1,5
<b>J</b>	16,2	14,4	18,05	16,15	14
<b>K</b>	dado autobl./locking nut	dado a corona/slotted nut	dado a corona/slotted nut	dado a corona/slotted nut	dado a corona/slotted nut
<b>TEMPRA Sfera/Cono HARDENING Sphere/ Cone</b>	S/-	-/-	-/-	-/-	-/-
<b>RIF. FRAP Snodo fil sinistro Left hand thread</b>		<b>26</b>	<b>1406</b>	<b>85</b>	

# FRAP *Teste sterzo maschio - Male tie rod ends*



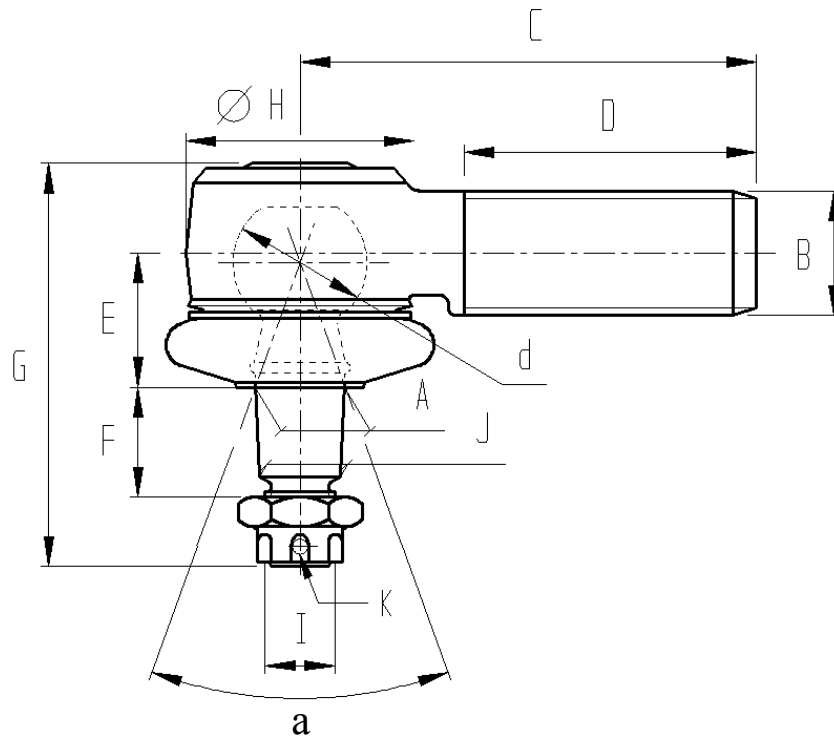
RIF. FRAP	321	33	320	34	722
<b>dxa</b>	26x32°	26x35°	26x36°	26x40°	27x40°
<b>A</b>	20 / 1:10	16 / 1:10	18 / 1:10	15,9 / 1:10	18 / 1:10
<b>B</b>	20x1	16x1	20x1	16x1	18x1,5
<b>C</b>	80	100	80	88	95
<b>D</b>	50	53	50	40	55
<b>E</b>	26	25	24	24	27
<b>F</b>	22	14	22	16	22
<b>G</b>	84	72	84	72	81
<b>H</b>	47	45	47	45	46
<b>I</b>	16x1,5	14x1,5	14x1,5	14x1,5	14x1,5
<b>J</b>	18,2	14,8	16,2	14,8	16,2
<b>K</b>	dado autobl./locking nut	dado a corona/slotted nut	dado autobl./locking nut	dado a corona/slotted nut	dado a corona/slotted nut
<b>TEMPRA Sfera/Cono HARDENING Sphere/ Cone</b>	-/-	-/-	-/-	-/-	S/-
<b>RIF. FRAP Snodo fil sinistro Left hand thread</b>	<b>2864</b>	<b>89</b>			<b>723</b>

# FRAP *Teste sterzo maschio - Male tie rod ends*



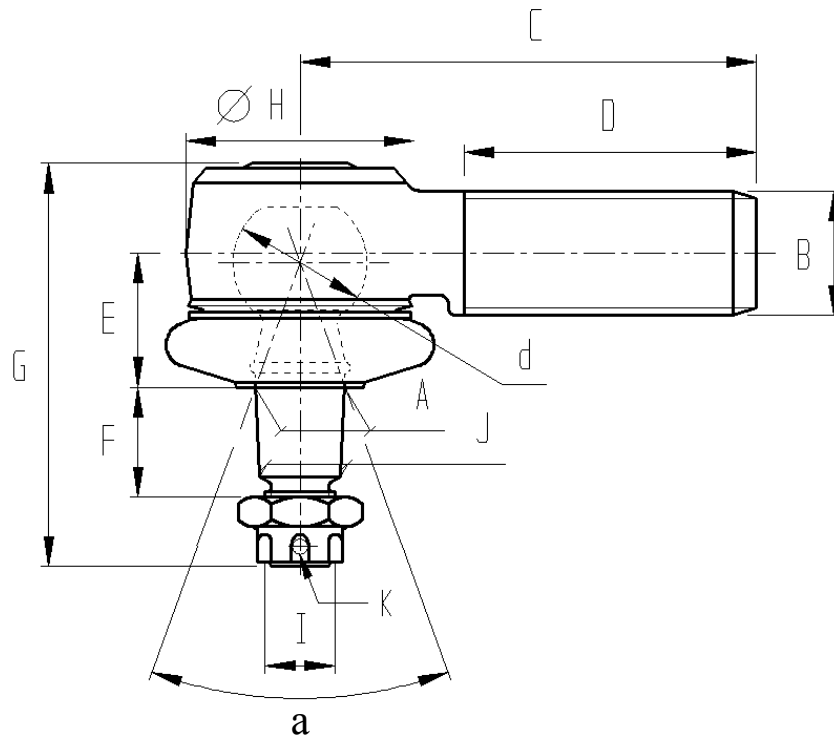
RIF. FRAP	432	735	2882	2890	540
<b>dxa</b>	27x40°	30x32°	30x35°	30x38°	30x40°
<b>A</b>	18 / 1:10	20 / 1:10	22 / 1:10	22,8 / 1:8	18 / 1:10
<b>B</b>	22x1,5	24x1,5	16x1,5	1"x16	22x1,5
<b>C</b>	95	105	60	105	95
<b>D</b>	70	78	30	73	70
<b>E</b>	27	26	26	28	29
<b>F</b>	22	24	26	30	24
<b>G</b>	81	91	94	100	92
<b>H</b>	46	50	50	50	50
<b>I</b>	14x1,5	16x1,5	18x1,5	3/4"x16	14x1,5
<b>J</b>	16,2	18	19,9	19,6	16,2
<b>K</b>	dado a corona/slotted nut	dado autobl./locking nut	dado a corona/slotted nut	dado autobl./locking nut	dado a corona/slotted nut
<b>TEMPRA Sfera/Cono HARDENING Sphere/ Cone</b>	S/-	S/C	S/C	S/-	S/-
<b>RIF. FRAP Snodo fil sinistro Left hand thread</b>	<b>532</b>	<b>1563</b>		<b>2891</b>	

# FRAP *Teste sterzo maschio - Male tie rod ends*



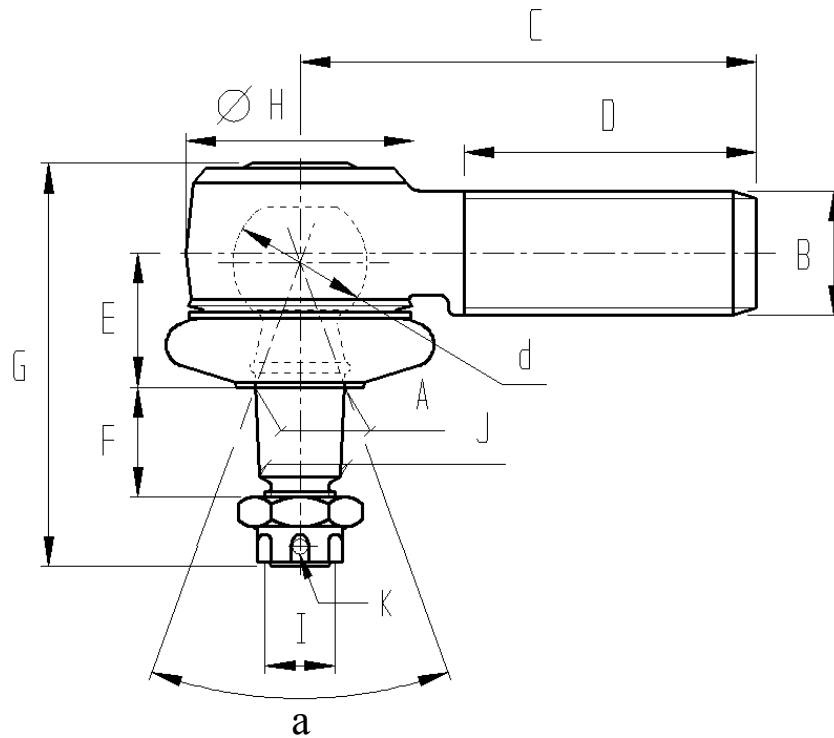
RIF. FRAP	635	414	736	-	1308
<b>dxa</b>	30x40°	30x40°	30x40°	30x40°	30x40°
<b>A</b>	20 / 1:10	20 / 1:10	22 / 1:10	22 / 1:10	22 / 1:10
<b>B</b>	20x1	24x1,5	24x1,5	24x1,5	24x2
<b>C</b>	80	105	105	73	105
<b>D</b>	53	78	78	45	78
<b>E</b>	29,5	29,5	26	26	26
<b>F</b>	22	24	26	26	26
<b>G</b>	93	92	94	94	94
<b>H</b>	50	50	50	50	50
<b>I</b>	16x1,5	16x1,5	18x1,5	18x1,5	18x1,5
<b>J</b>	18,2	18,1	19,9	19,9	19,9
<b>K</b>	dado autobl./locking nut	dado a corona/slotted nut	dado autobl./locking nut	dado a corona/slotted nut	dado autobl./locking nut
<b>TEMPRA Sfera/Cono HARDENING Sphere/ Cone</b>	S/-	S/C	S/C	S/C	S/C
<b>RIF. FRAP Snodo fil sinistro Left hand thread</b>		<b>561</b>	<b>2016</b>	<b>1628</b>	

# FRAP *Teste sterzo maschio - Male tie rod ends*



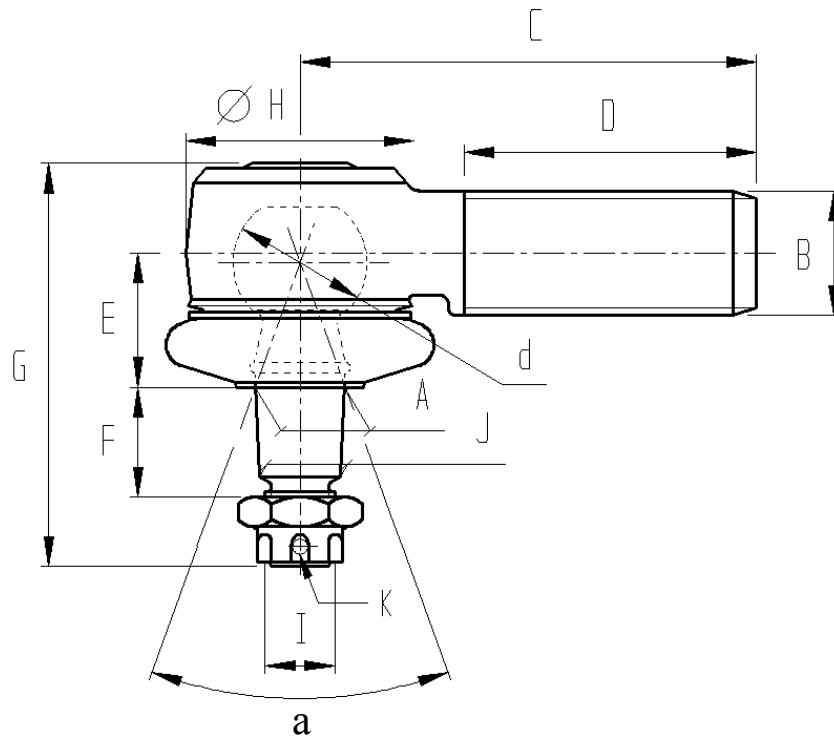
RIF. FRAP	470	465	2041	2852	2685
<b>dxa</b>	30x40°	30x45°	35x22°	35x34°	35x35°
<b>A</b>	22 / 1:10	22 / 1:10	27,3 / 1:8	26 / 1:10	26 / 1:10
<b>B</b>	28x1,5	24x1,5	1 1/4"x12	24x1,5	28x1,5
<b>C</b>	105	105	72	120	88
<b>D</b>	75	74	41	87	54
<b>E</b>	27,5	32	25	30	33
<b>F</b>	26	24	32	30	30
<b>G</b>	94	94	105	105	105
<b>H</b>	50	50	54	56	60
<b>I</b>	18x1,5	18x1,5	3/4"x16	20x1,5	20x1,5
<b>J</b>	19,95	19,95	23,8	23,5	23,5
<b>K</b>	dado a corona/slotted nut	dado a corona/slotted nut	dado autobl./locking nut	dado autobl./locking nut	dado autobl./locking nut
<b>TEMPRA Sfera/Cono HARDENING Sphere/ Cone</b>	S/-	S/-	-/-	S/-	S/C
<b>RIF. FRAP Snodo fil sinistro Left hand thread</b>	<b>471</b>	<b>466</b>		<b>2853</b>	

# FRAP *Teste sterzo maschio - Male tie rod ends*



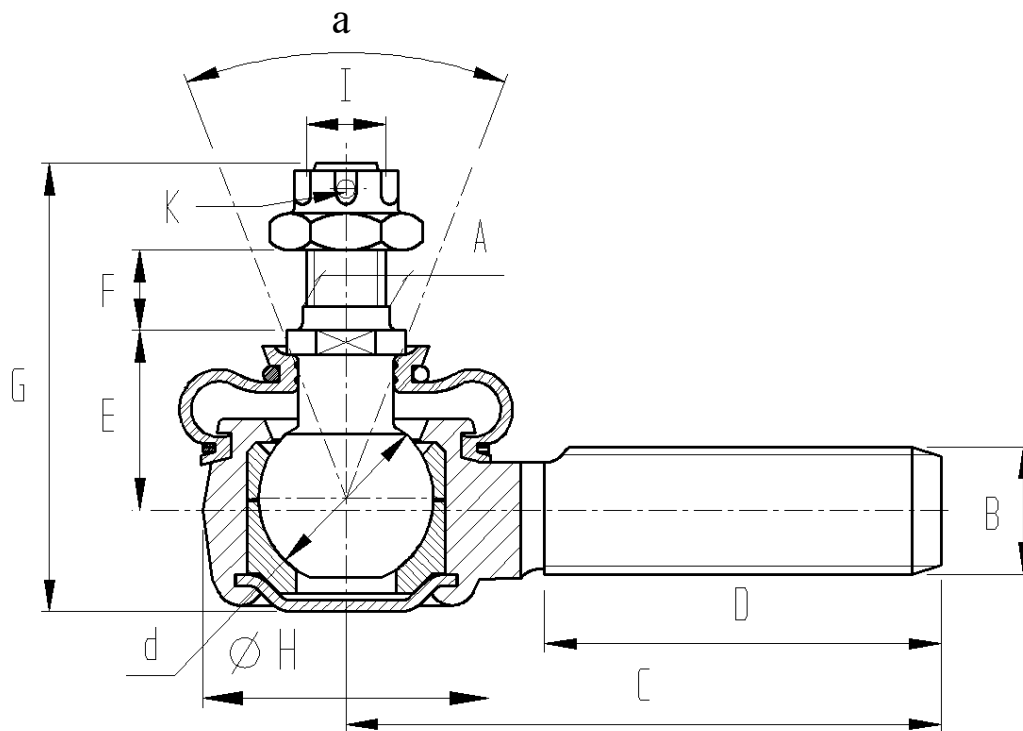
RIF. FRAP	1041	405	2116	28	1105
<b>dxa</b>	35x35°	35x40°	40x20°	40x30°	40x35°
<b>A</b>	26 / 1:10	22 / 1:10	31 / 1:8	22 / 1:8	30 / 1:10
<b>B</b>	30x1,5	28x1,5	1 1/4"x12	25x1,5	30x1,5
<b>C</b>	115	115	73	100	120
<b>D</b>	78	78	38	70	85
<b>E</b>	30	35	30	30	36
<b>F</b>	30	26	35	30	34
<b>G</b>	105	101	120	98	118
<b>H</b>	56	56	66	55	69
<b>I</b>	20x1,5	18x1,5	7/8"x14	16x1,5	24x1,5
<b>J</b>	23,5	19,95	27,6	19,4	27,1
<b>K</b>	dado a corona/slotted nut	dado a corona/slotted nut	dado autobl./locking nut	dado a corona/slotted nut	dado a corona/slotted nut
<b>TEMPRA Sfera/Cono HARDENING Sphere/ Cone</b>	S/C	S/-	S/-	S/-	S/C
<b>RIF. FRAP</b> Snodo fil sinistro Left hand thread	<b>1042</b>				<b>1106</b>

# FRAP *Teste sterzo maschio - Male tie rod ends*

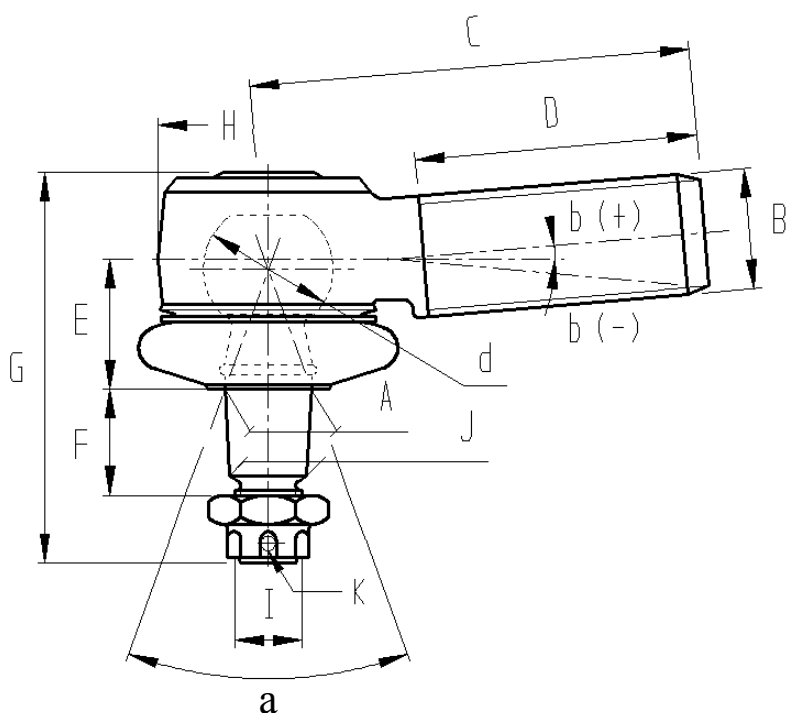


RIF. FRAP	2125	1047	...		
<b>dx</b>	45x20°	50x35°			
<b>A</b>	35 / 1:8	38 / 1:10			
<b>B</b>	1 1/4"x12	38x1,5			
<b>C</b>	76	135			
<b>D</b>	27	90			
<b>E</b>	31	42			
<b>F</b>	37	42			
<b>G</b>	136	141			
<b>H</b>	66	80			
<b>I</b>	1"x12	30x1,5			
<b>J</b>	30,7	34,3			
<b>K</b>	dado autobl./locking nut	dado a corona/slotted nut			
<b>TEMPRA Sfera/Cono HARDENING Sphere/ Cone</b>	S/-	S/C			
<b>RIF. FRAP</b> Snodo fil sinistro Left hand thread		<b>1048</b>			

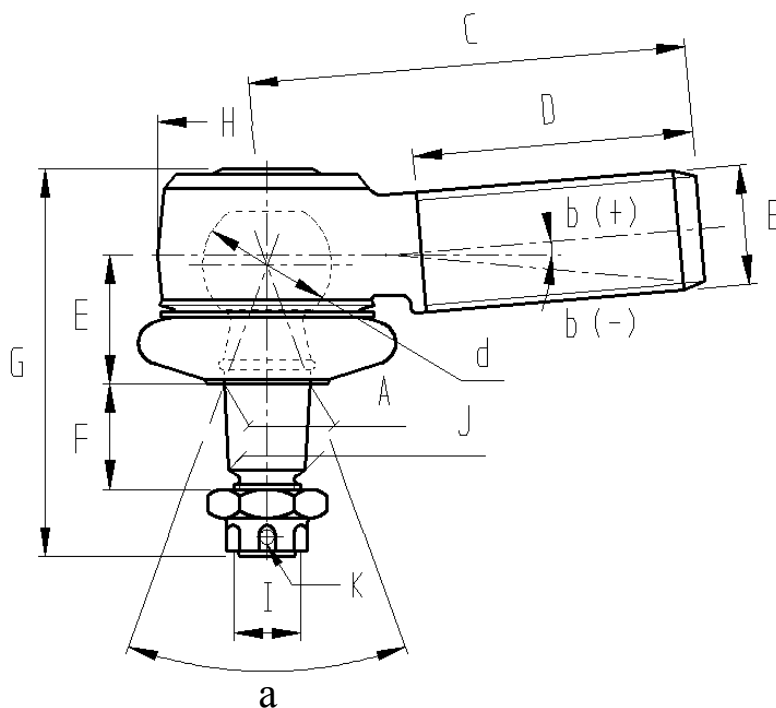
# FRAP *Teste sterzo maschio - Male tie rod ends*



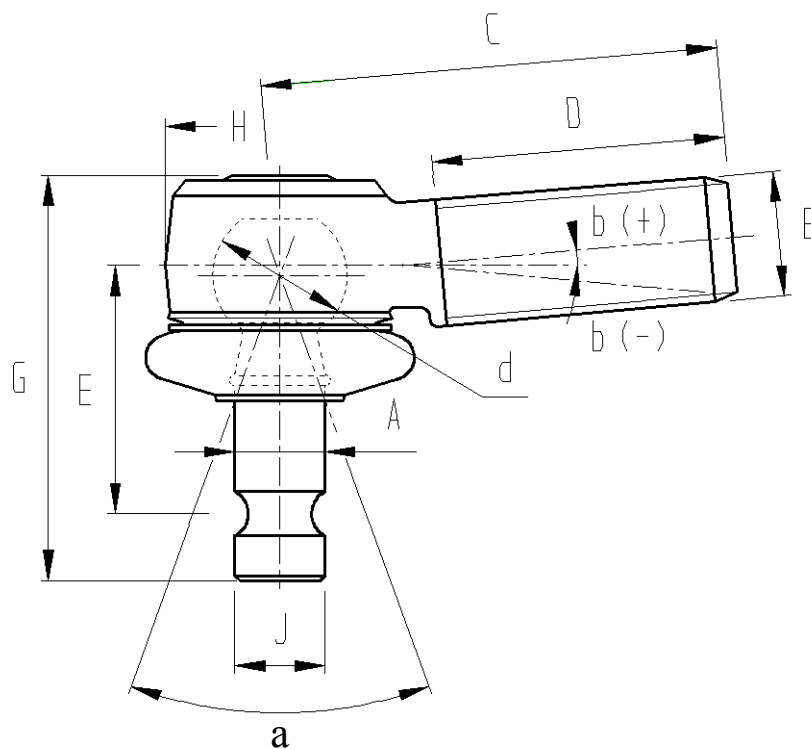
RIF. FRAP	3009	2792	2794	1866	1516
<b>dx</b>	18x58°	18x58°	18x58°	19x25°	22x42°
<b>A</b>	9,5	10	10,5	11	-
<b>B</b>	12x1,25	12x1,25	10x1,25	12 cilindrico	16x2
<b>C</b>	49	60	60	65	75
<b>D</b>	30	30	30	48	50
<b>E</b>	18	24	18	18	22,5
<b>F</b>	22	17	16	7	7
<b>G</b>	65	65	58	52	56
<b>H</b>	30	30	30	32	34
<b>I</b>	3/8"x24	10x1,25	10x1,25	10x1,5	10x1,5
<b>-</b>	-	-	-	-	-
<b>K</b>	dado a corona/slotted nut	dado a corona/slotted nut	dado a corona/slotted nut	dado autobl./locking nut	dado autobl./locking nut
<b>RIF. FRAP</b> Snodo fil sinistro Left hand thread	<b>3010</b>	<b>2793</b>	<b>2795</b>		



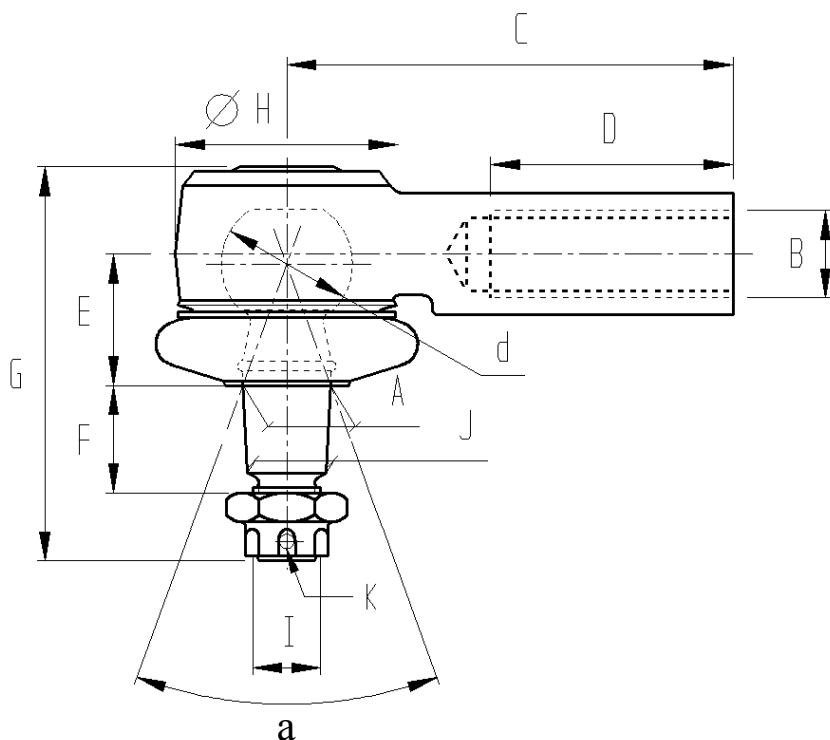
RIF. FRAP	961 (2434)	762	2158	2160	2161
<b>dxaxb</b>	19x30°x-6°	22x44°x-3°	22x54°x21°	22x50°x12°	22x54°x25°
<b>A</b>	12 / 1:10	14,5 / 1:5	14 / 1:10	13,8 / 1:8	14 / 1:10
<b>B</b>	12x1,5	14x1,5	16x1,5	16x1,5	16x1,5
<b>C</b>	88	90	90	90	90
<b>D</b>	50	55	60	60	60
<b>E</b>	20	25	22	18,5	22
<b>F</b>	16	14	17	19	17
<b>G</b>	65	72	72	65	72
<b>H</b>	32	38	36	36	36
<b>I</b>	10x1	10x1,25	12x1,25	10x1,25	12x1,25
<b>J</b>	10,75	12	12,6	11,7	12,6
<b>K</b>	dado autobl./locking nut	dado autobl./locking nut	dado autobl./locking nut	dado autobl./locking nut	dado autobl./locking nut
<b>TEMPRA Sfera/Cono HARDENING Sphere/ Cone</b>	-/-	S/-	-/-	-/-	-/-
<b>RIF. FRAP Snodo fil sinistro Left hand thread</b>					



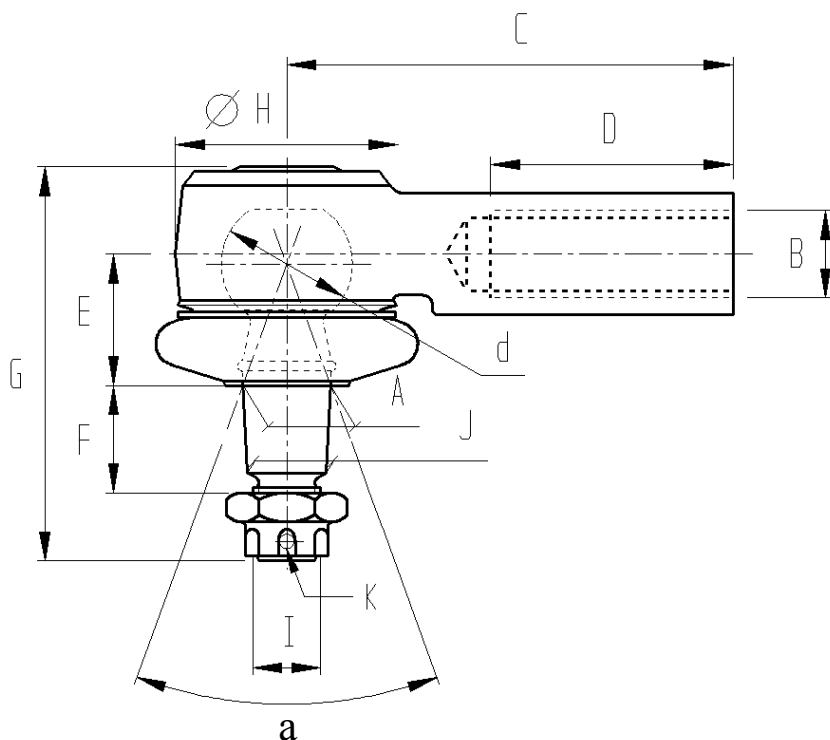
RIF. FRAP	2162	3086			
<b>dxaxb</b>	22x54°x25°	22x64°x21°			
<b>A</b>	13,8 / 1:10	13,9 / 1:6			
<b>B</b>	16x1,5	16x1,5			
<b>C</b>	90	90			
<b>D</b>	60	60			
<b>E</b>	18,5	21			
<b>F</b>	19	17			
<b>G</b>	65	65			
<b>H</b>	36	36			
<b>I</b>	10x1,25	10x1,25			
<b>J</b>	11,7	11,9			
<b>K</b>	dado autobl./locking nut	dado a corona/slotted nut			
<b>TEMPRA Sfera/Cono HARDENING Sphere/ Cone</b>	-/-	-/-			
<b>RIF. FRAP</b> Snodo fil sinistro Left hand thread					



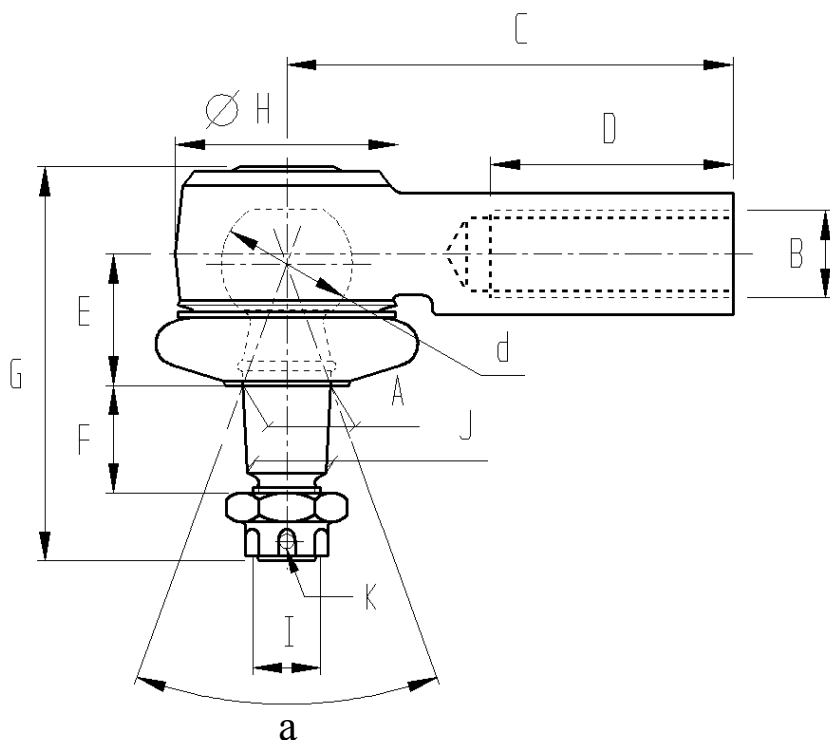
<b>RIF. FRAP</b>	<b>2419</b>	...			
<b>dxaxb</b>	22x54°x21°				
<b>A</b>	14				
<b>B</b>	16x1,5				
<b>C</b>	90				
<b>D</b>	60				
<b>E</b>	31				
<b>G</b>	55				
<b>H</b>	36				
<b>J</b>	14				
-					
-					
-					
<b>TEMPRA Sfera/Cono HARDENING Sphere/ Cone</b>	-/-				
<b>RIF. FRAP</b> Snodo fil sinistro Left hand thread					



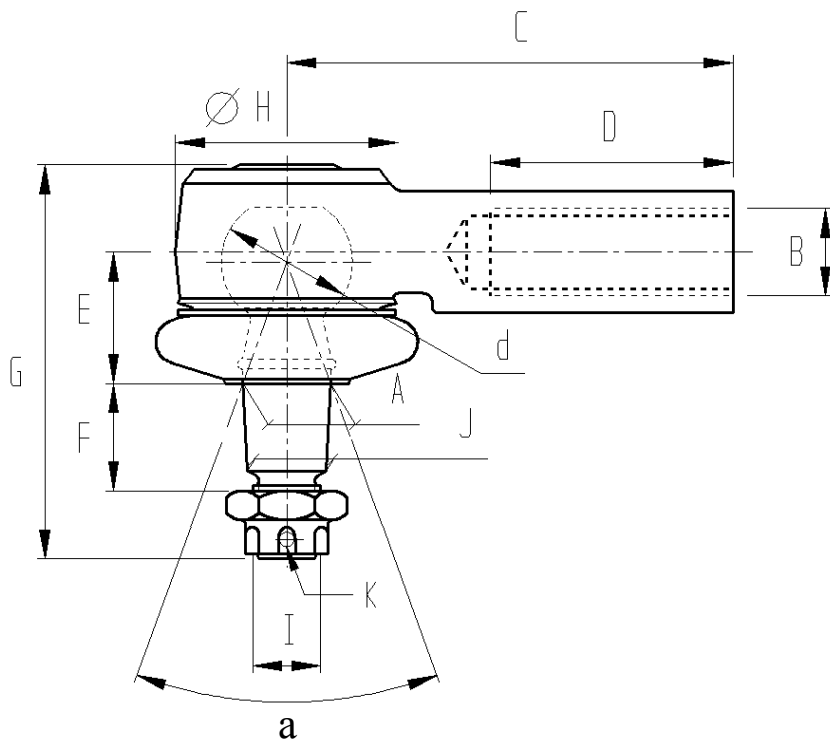
RIF. FRAP	616	850	867	1800	782
<b>dxa</b>	22x34°	22x45°	22x45°	22x46°	22x48°
<b>A</b>	14 / 1:10	13 / 1:10	13 / 1:10	15 / 1:6	14 / 1:10
<b>B</b>	14x1,5	12x1,5	12x1,5	14x1,5	14x1,5
<b>C</b>	74	116	125	84	75
<b>D</b>	37	45	45	47	40
<b>E</b>	24	20	16	21	22
<b>F</b>	18	18	18	25	20
<b>G</b>	75	65	65	74	72
<b>H</b>	37	38	38	36	36
<b>I</b>	12x1,5	10x1,25	10x1,25	12x1,25	12x1,5
<b>J</b>	12,6	12,05	12,05	12,55	12,6
<b>K</b>	dado autobl./locking nut	dado autobl./locking nut	dado autobl./locking nut	dado a corona/slotted nut	dado autobl./locking nut
<b>TEMPRA Sfera/Cono HARDENING Sphere/ Cone</b>	-/-	-/-	-/-		-/-
<b>RIF. FRAP</b> Snodo fil sinistro Left hand thread					



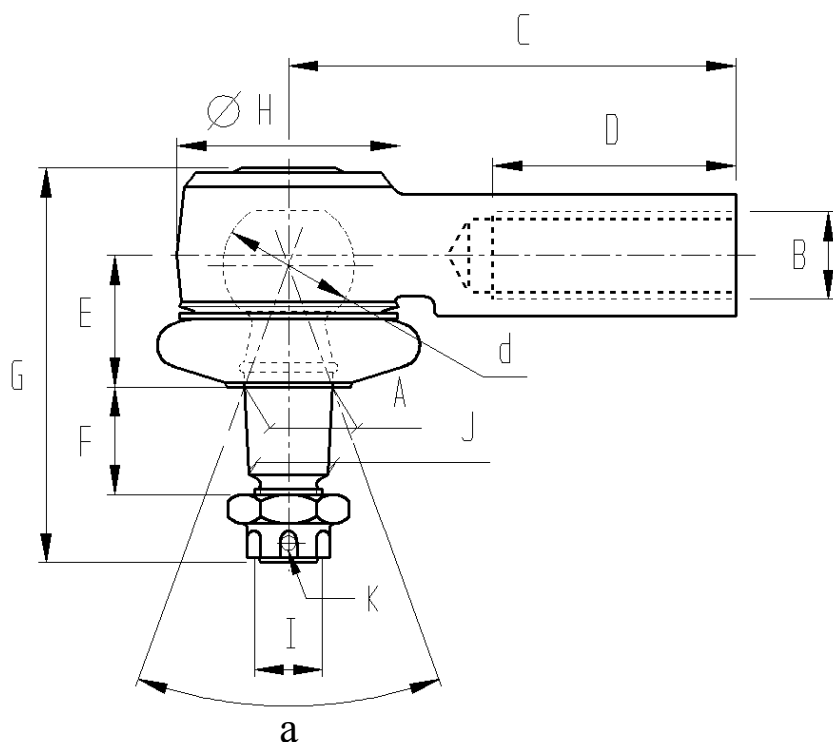
RIF. FRAP	2887	1057	1637	1401	1489
<b>dxa</b>	22x50°	22x52°	22x55°	22x55°	22x55°
<b>A</b>	15,8 / 1:8	14 / 1:10	13,5 / 1:6	12,8 / 1:8	14 / 1:10
<b>B</b>	14x2	14x1,5	1/2"x20	1/2"x20	14x1,5
<b>C</b>	71	142	67	67	75
<b>D</b>	37	43	35	35	40
<b>E</b>	24	22	22	17,5	19,5
<b>F</b>	17	22	14	14	17
<b>G</b>	72	75	65	60	67
<b>H</b>	40	38	36	36	37
<b>I</b>	12x1,5	12x1,5	10x1	10x1	10x1,25
<b>J</b>	14,25	12,6	11,55	11,35	12,6
<b>K</b>	dado autobl./locking nut	dado autobl./locking nut	dado a corona/slotted nut	dado autobl./locking nut	dado autobl./locking nut
<b>TEMPRA Sfera/Cono HARDENING Sphere/ Cone</b>	-/-	-/-	-/-	-/-	-/-
<b>RIF. FRAP</b> Snodo fil sinistro Left hand thread					



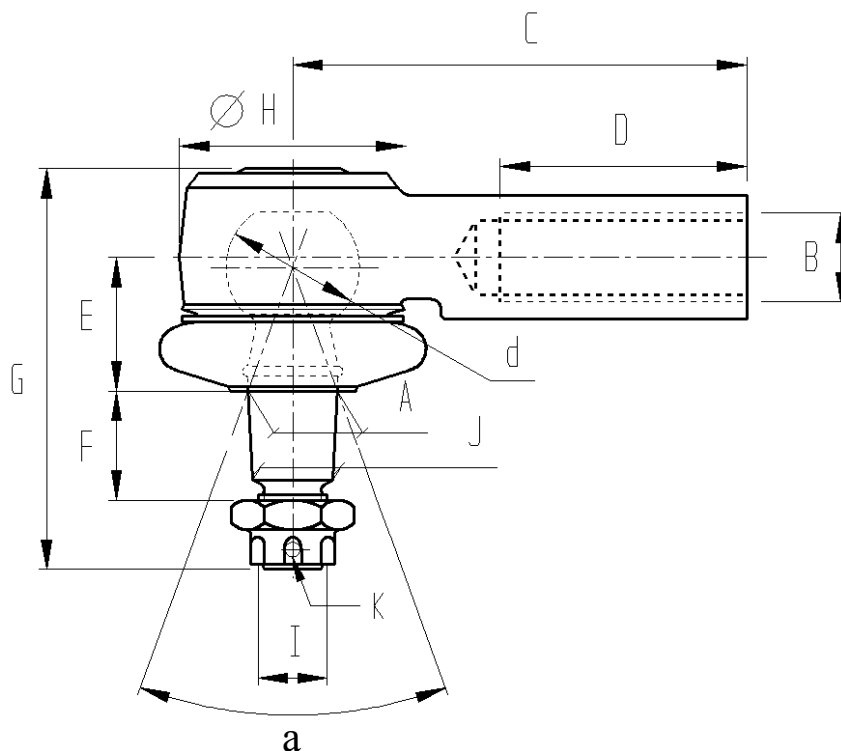
RIF. FRAP	1060	1192	1603	1602	1601
<b>dxa</b>	22x56°	22x55°	24x36°	24x36°	24x36°
<b>A</b>	13 / 1:10	14 / 1:10	18 / 1:10	18 / 1:10	18 / 1:10
<b>B</b>	12x1,5	14x1,5	16x1,5	16x1,5	16x1,5
<b>C</b>	162	91	43	50	90
<b>D</b>	45	53	16	16	55
<b>E</b>	22	18,5	23	23	23
<b>F</b>	18	15	22	22	22
<b>G</b>	65	65	76	76	76
<b>H</b>	38	36	41	41	41
<b>I</b>	10x1,25	10x1,25	14x1,5	14x1,5	14x1,5
<b>J</b>	12,05	12,95	16,2	16,2	16,2
<b>K</b>	dado autobl./locking nut	dado autobl./locking nut	dado a corona/slotted nut	dado a corona/slotted nut	dado a corona/slotted nut
<b>TEMPRA Sfera/Cono HARDENING Sphere/ Cone</b>	-/-	-/-	S/C	S/C	S/C
<b>RIF. FRAP</b> Snodo fil sinistro Left hand thread					



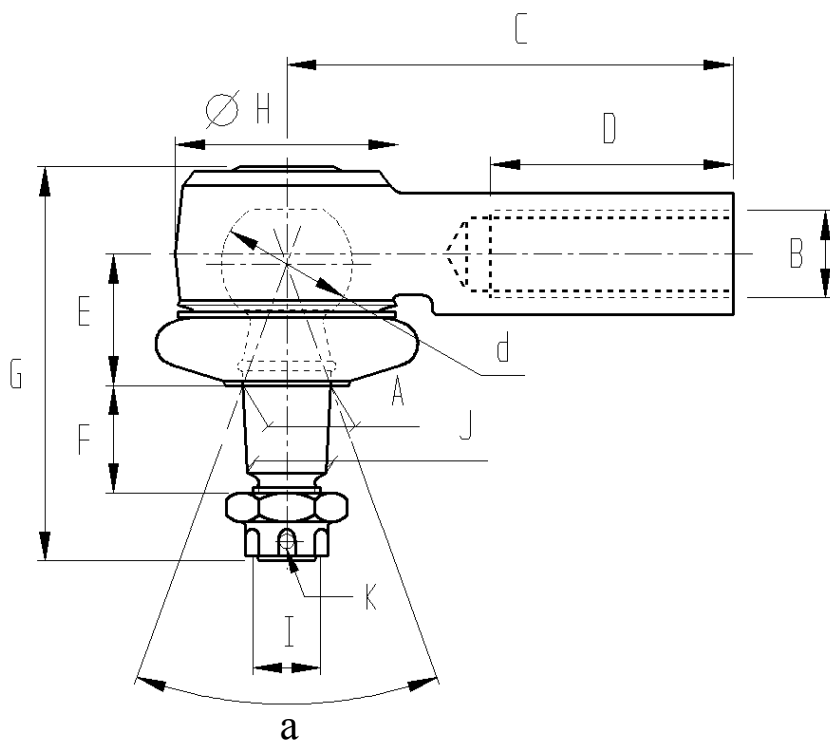
RIF. FRAP	819	1407	1402	1553	1881
<b>dxa</b>	25x36°	25x40°	25x42°	25x50°	25x56°
<b>A</b>	16 / 1:10	20 / 1:10	20 / 1:10	16 / 1:10	18 / 1:8
<b>B</b>	16x1,5	16x1,5	16x1,5	16x1,5	14x1,5
<b>C</b>	80	80	100	120	75
<b>D</b>	40	45	60	45	35
<b>E</b>	30	24	24	28	22,5
<b>F</b>	27	23	23	20	18
<b>G</b>	84	80	80	81	75
<b>H</b>	40	39	40	40	40
<b>I</b>	12x1,25	16x1,5	16x1,5	12x1,25	14x1,5
<b>J</b>	14,4	18,05	18,05	14,4	16,2
<b>K</b>	dado autobl./locking nut	dado autobl./locking nut	dado autobl./locking nut	dado autobl./locking nut	dado a corona/slotted nut
<b>TEMPRA Sfera/Cono HARDENING Sphere/ Cone</b>	-/-	-/-	-/-	-/-	-/C
<b>RIF. FRAP</b> Snodo fil sinistro Left hand thread					



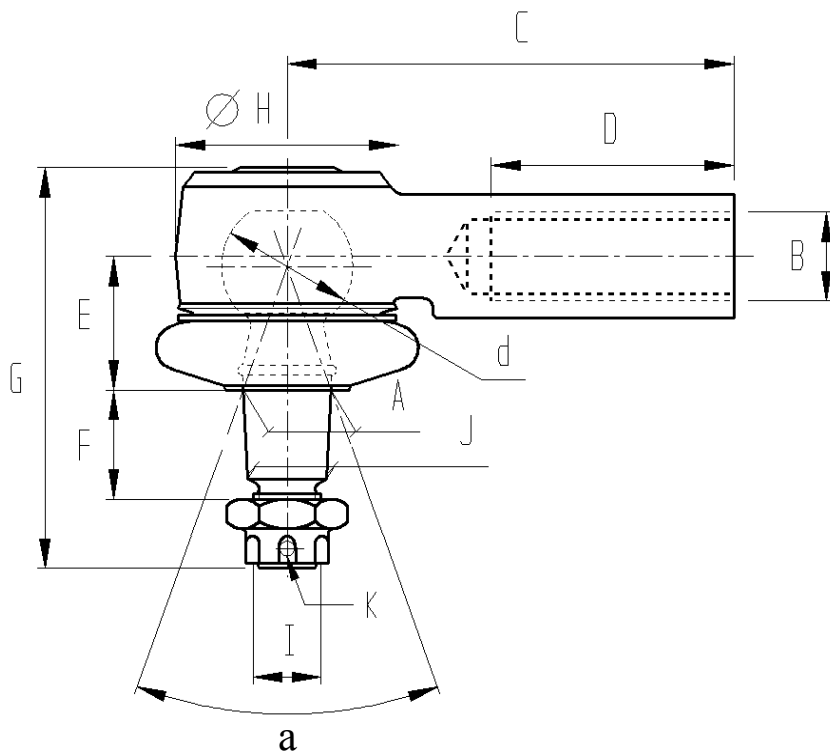
RIF. FRAP	1062	1235	1673	1238	1191
<b>dxa</b>	25x56°	27x40°	27x40°	27x40°	27x40°
<b>A</b>	18 / 1:10	18 / 1:10	18 / 1:10	18 / 1:10	18 / 1:10
<b>B</b>	16x1,5	16x1,5	18x1,5	18x1,5	18x1,5
<b>C</b>	100	57	81	92	92
<b>D</b>	60	26	39	50	50
<b>E</b>	22	23	27	23	27
<b>F</b>	24	22	22	22	22
<b>G</b>	77	77	81	77	81
<b>H</b>	40	46	46	46	46
<b>I</b>	14x1,5	14x1,5	14x1,5	14x1,5	14x1,5
<b>J</b>	16,15	16,2	16,2	16,2	16,2
<b>K</b>	dado a corona/slotted nut	dado a corona/slotted nut	dado a corona/slotted nut	dado a corona/slotted nut	dado a corona/slotted nut
<b>TEMPRA Sfera/Cono HARDENING Sphere/ Cone</b>	-/-	S/-	S/-	S/-	S/-
<b>RIF. FRAP</b> Snodo fil sinistro Left hand thread					



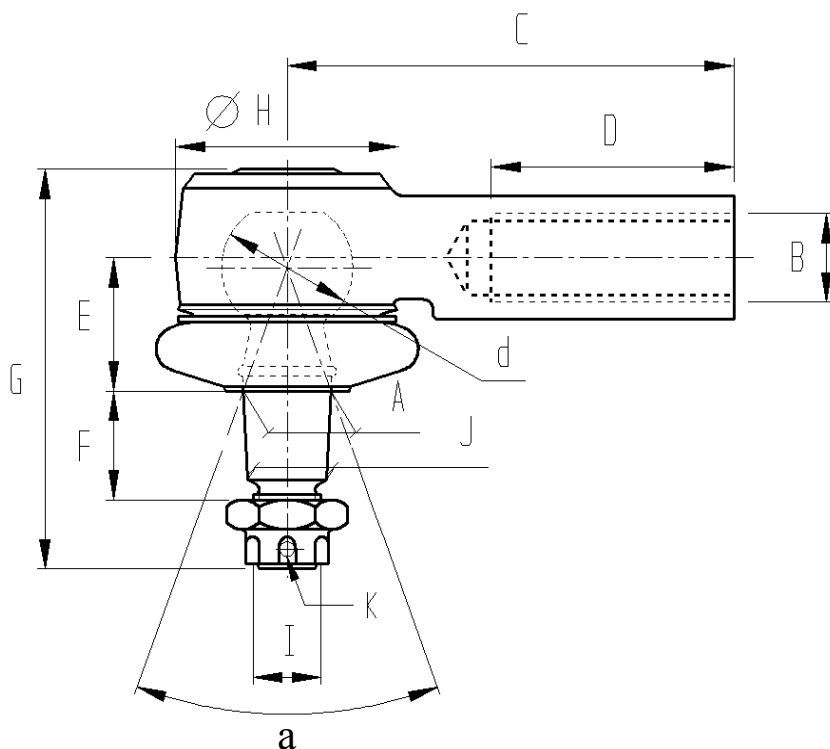
RIF. FRAP	2851	2200	2113	2686	2854
<b>dxa</b>	30x30°	30x30°	30x30°	30x32°	30x36°
<b>A</b>	22 / 1:10	22 / 1:10	22 / 1:10	22 / 1:10	22 / 1:10
<b>B</b>	18x1,5	18x1,5	18x1,5	20x1,5	18x1,5
<b>C</b>	66	220	105	65	58
<b>D</b>	29	50	43	28	39
<b>E</b>	31,5	26	31	26	26
<b>F</b>	27	26	25	26	26
<b>G</b>	102	94	103	94	94
<b>H</b>	50	50	50	50	50
<b>I</b>	18x1,5	18x1,5	18x1,5	18x1,5	18x1,5
<b>J</b>	19,9	19,9	19,9	19,9	19,9
<b>K</b>	dado autobl./locking nut	dado autobl./locking nut	dado autobl./locking nut	dado autobl./locking nut	dado autobl./locking nut
<b>TEMPRA Sfera/Cono HARDENING Sphere/ Cone</b>	S/-	S/C	S/-	S/C	S/C
<b>RIF. FRAP</b> Snodo fil sinistro Left hand thread		<b>2202</b>			



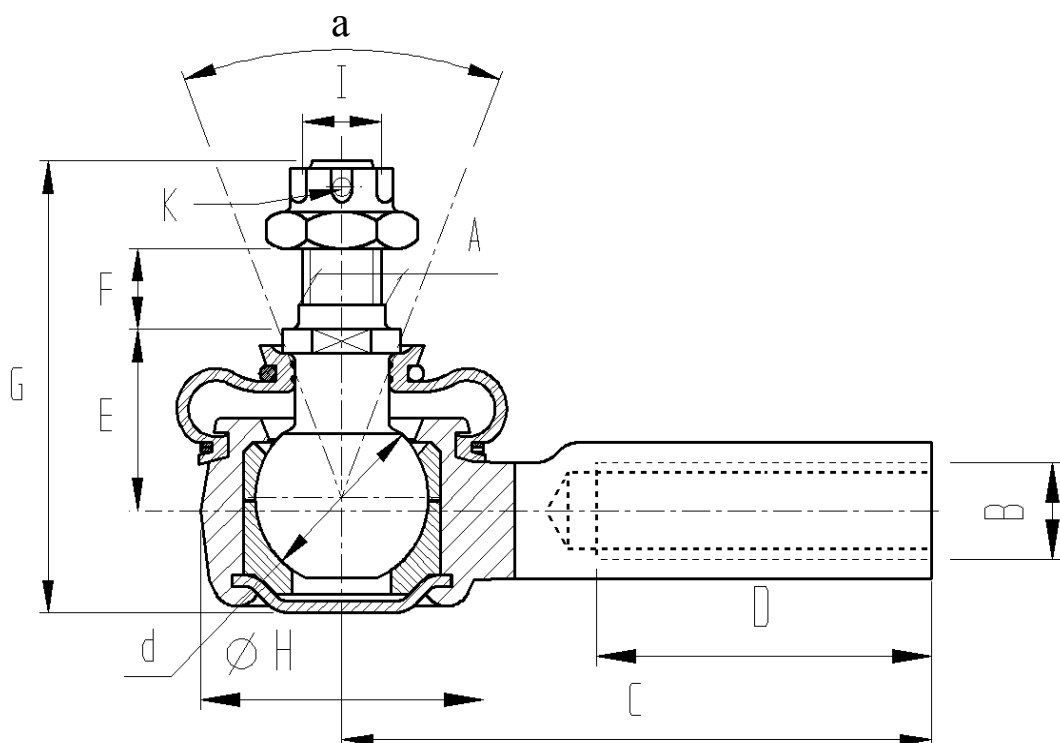
RIF. FRAP	2898	2856	2858	2820	2898
<b>dxa</b>	30x36°	30x36°	30x36°	30x36°	30x36°
<b>A</b>	22 / 1:10	22 / 1:10	22 / 1:10	22 / 1:10	22 / 1:10
<b>B</b>	18x1,5	18x1,5	18x1,5	18x1,5	18x1,5
<b>C</b>	80	92	200	153	80
<b>D</b>	38	40	51	65	38
<b>E</b>	26	26	26	26	26
<b>F</b>	26	26	26	26	26
<b>G</b>	94	94	94	94	94
<b>H</b>	50	50	50	50	50
<b>I</b>	18x1,5	18x1,5	18x1,5	18x1,5	18x1,5
<b>J</b>	19,9	19,9	19,9	19,9	19,9
<b>K</b>	dado autobl./locking nut	dado autobl./locking nut	dado autobl./locking nut	dado autobl./locking nut	dado autobl./locking nut
<b>TEMPRA Sfera/Cono HARDENING Sphere/ Cone</b>	S/C	S/C	S/C	S/C	S/C
<b>RIF. FRAP</b> Snodo fil sinistro Left hand thread					



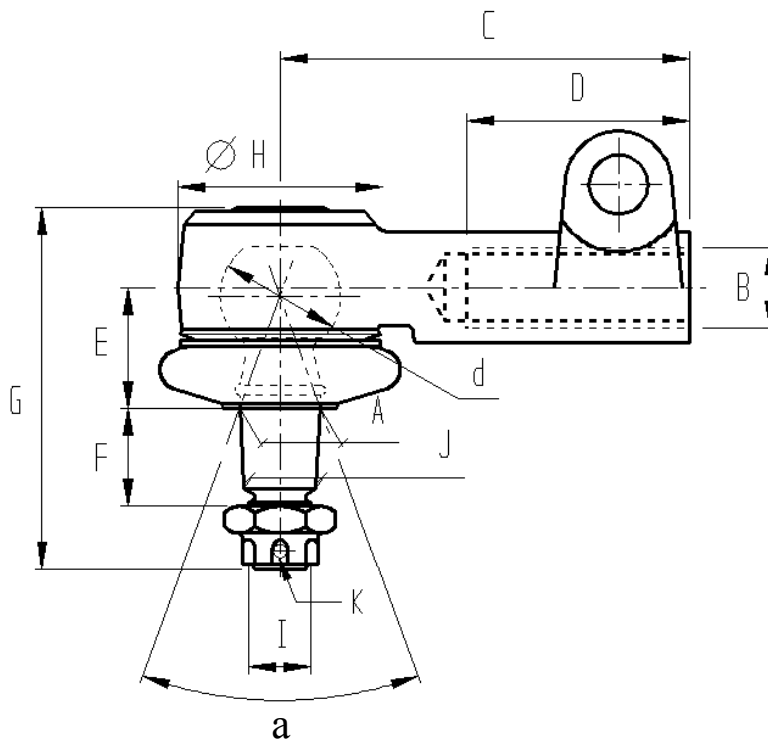
RIF. FRAP	2128	2806	2684	2131	2088
<b>dxa</b>	30x40°	30x44°	35x35°	35x36°	35x36°
<b>A</b>	18 / 1/10	20 / 1:10	26 / 1:10	26 / 1:10	26 / 1:10
<b>B</b>	18x1,5	16x2	24x1,5	22x1,5	22x1,5
<b>C</b>	92	57	77	138	238
<b>D</b>	52	26	32	70	70
<b>E</b>	27	26	33	33	33
<b>F</b>	22	24	30	30	30
<b>G</b>	86	91	110	105	105
<b>H</b>	50	50	62	62	62
<b>I</b>	14x1,5	16x1,5	20x1,5	20x1,5	20x1,5
<b>J</b>	16,2	18	23,5	23,5	23,5
<b>K</b>	dado a corona/slotted nut	dado autobl./locking nut	dado autobl./locking nut	dado a corona/slotted nut	dado a corona/slotted nut
<b>TEMPRA Sfera/Cono HARDENING Sphere/ Cone</b>	S/-	S/C	S/C	S/C	S/C
<b>RIF. FRAP</b> Snodo fil sinistro Left hand thread					



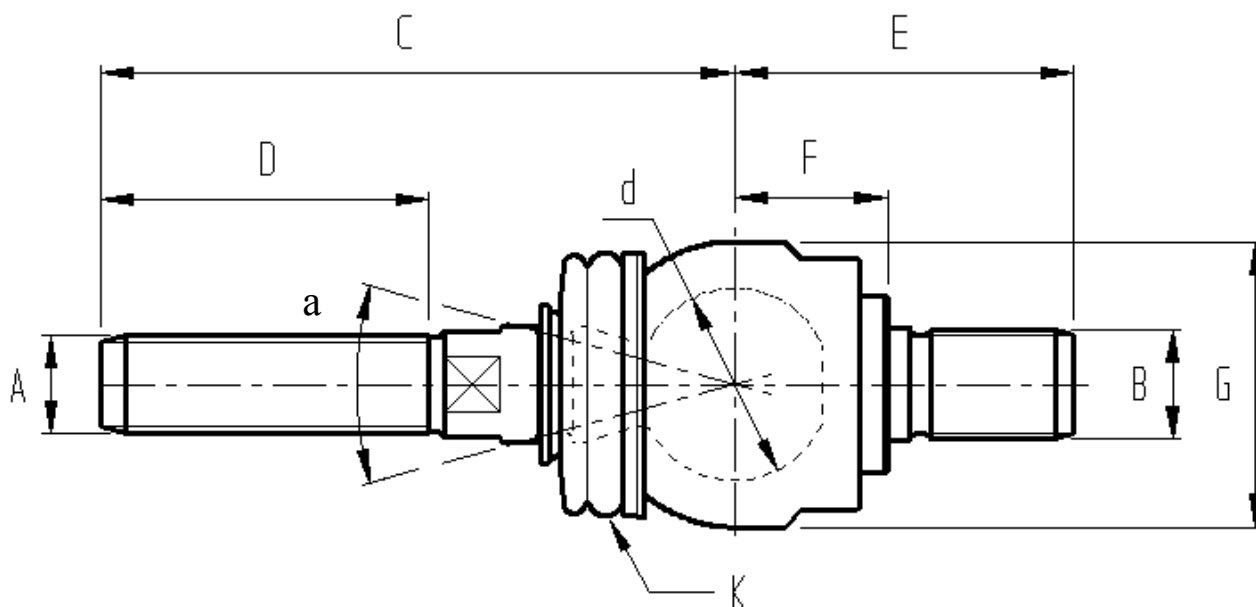
RIF. FRAP	2132	2482	2460	2483	2204
<b>dx</b>	35x36°	35x36°	35x36°	35x36°	40x34°
<b>A</b>	26 / 1:10	28 / 1:8	28 / 1:8	28 / 1:8	32 / 1:10
<b>B</b>	22x1,5	22x1,5	22x1,5	22x1,5	28x1,5
<b>C</b>	305	138	238	305	226
<b>D</b>	70	70	70	70	70
<b>E</b>	33	34	34	34	36
<b>F</b>	30	30	30	30	36
<b>G</b>	105	105	105	105	128
<b>H</b>	62	62	62	62	70
<b>I</b>	20x1,5	20x1,5	20x1,5	20x1,5	27x1,5
<b>J</b>	23,5	24,75	24,75	24,75	28,9
<b>K</b>	dado a corona/slotted nut	dado a corona/slotted nut	dado a corona/slotted nut	dado a corona/slotted nut	dado autobl./locking nut
<b>TEMPRA Sfera/Cono HARDENING Sphere/ Cone</b>	S/C	S/C	S/C	S/C	S/C
<b>RIF. FRAP</b> Snodo fil sinistro Left hand thread					



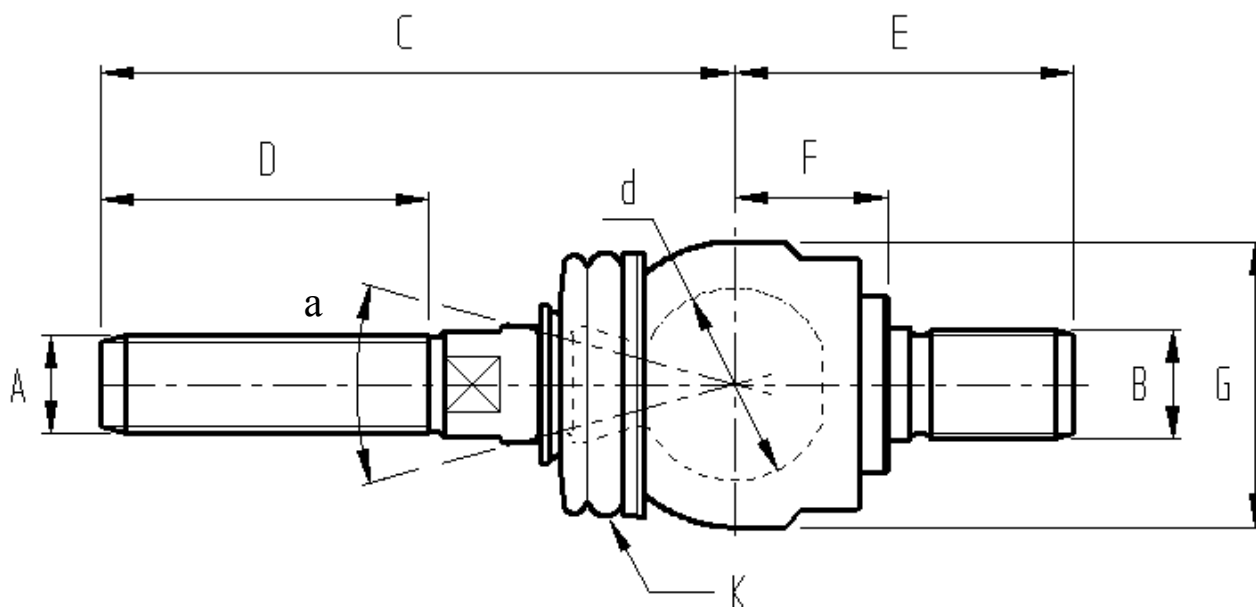
<b>RIF. FRAP</b>	<b>2789</b>	...			
<b>dxα</b>	18x58°				
<b>A</b>	10				
<b>B</b>	12x1,25				
<b>C</b>	55				
<b>D</b>	29				
<b>E</b>	24				
<b>F</b>	17				
<b>G</b>	65				
<b>H</b>	30				
<b>I</b>	10x1,25				
-	-				
<b>K</b>	dado a corona/slotted nut				
<b>RIF. FRAP</b>	<b>2790</b>				
Snodo fil sinistro Left hand thread					



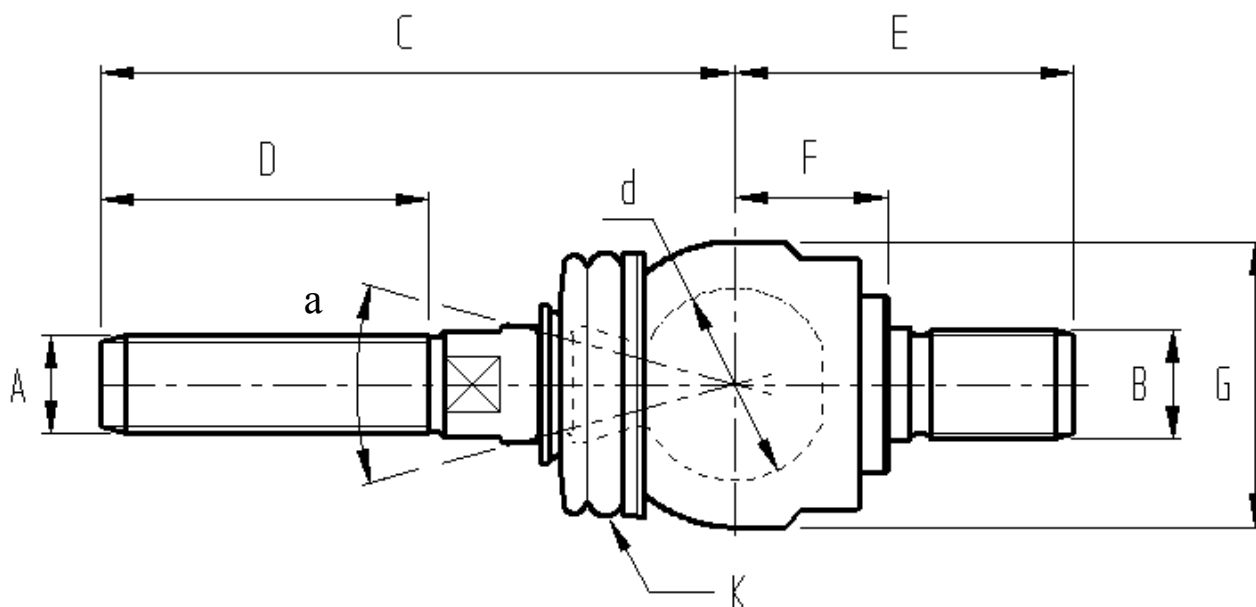
RIF. FRAP	2040	2115	2124	...	
<b>dx</b>	35x22°	40x20°	45x20°		
<b>A</b>	27,3 / 1:8	31 / 1:8	35 / 1:8		
<b>B</b>	7/8"x14	7/8"x14	7/8"x14		
<b>C</b>	92	91	91		
<b>D</b>	53	53	51		
<b>E</b>	25	30	31		
<b>F</b>	32	35	37		
<b>G</b>	105	120	136		
<b>H</b>	54	66	60		
<b>I</b>	3/4"x16	7/8"x14	1"x12		
<b>J</b>	23,8	27,6	30,7		
<b>K</b>	dado autobl./locking nut	dado autobl./locking nut	dado autobl./locking nut		
<b>TEMPRA Sfera/Cono HARDENING Sphere/ Cone</b>	-/-	S/-	S/-		
<b>RIF. FRAP</b> Snodo fil sinistro Left hand thread					



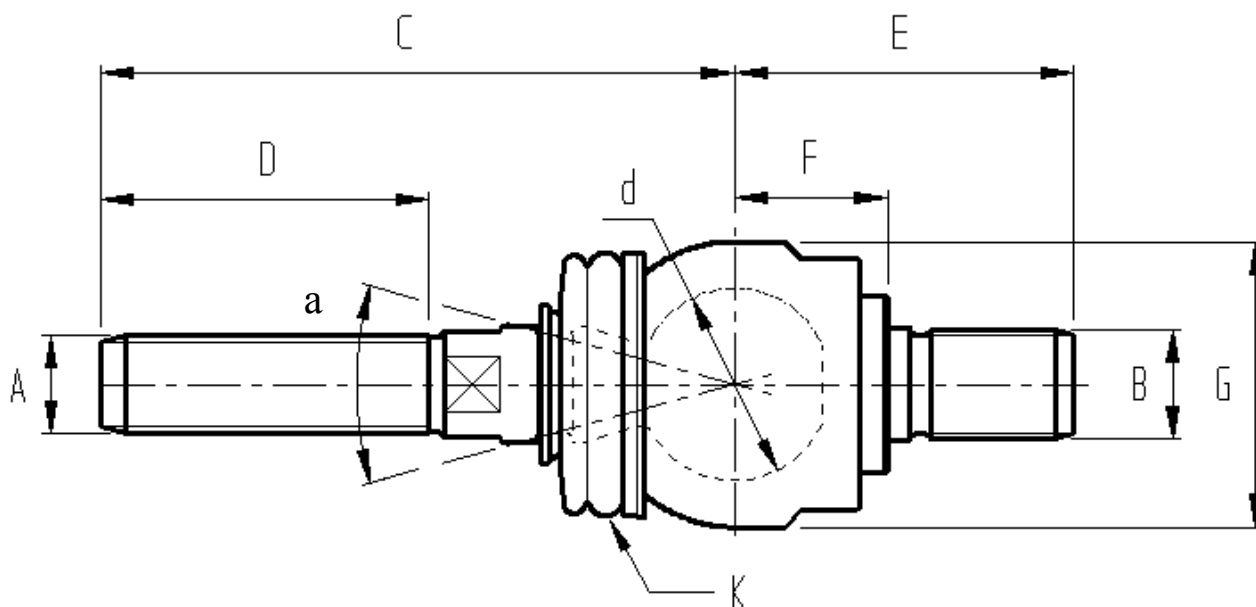
RIF. FRAP	1609	1606	2861	1607	1236
<b>dx</b>	25x36°	25x36°	25x50°	28x30°	28x30°
<b>A</b>	16x1,5	16x1,5	14x1,5	18x1,5	16x1,5
<b>B</b>	14x1,5	14x1,5	14x1,5	14x1,5	16x1,5
<b>C</b>	50	170	75	101	80
<b>D</b>	24	65	45	60	36
<b>E</b>	40	38	37	45	49
<b>F</b>	19	18	22	24	24
<b>G</b>	37	37	37	41	41
<b>K</b>	cuffia / dust cover	cuffia / dust cover	cuffia / dust cover	cuffia / dust cover	cuffia / dust cover
-					
-					
-					
<b>RIF. FRAP</b> Snodo fil sinistro Left hand thread					



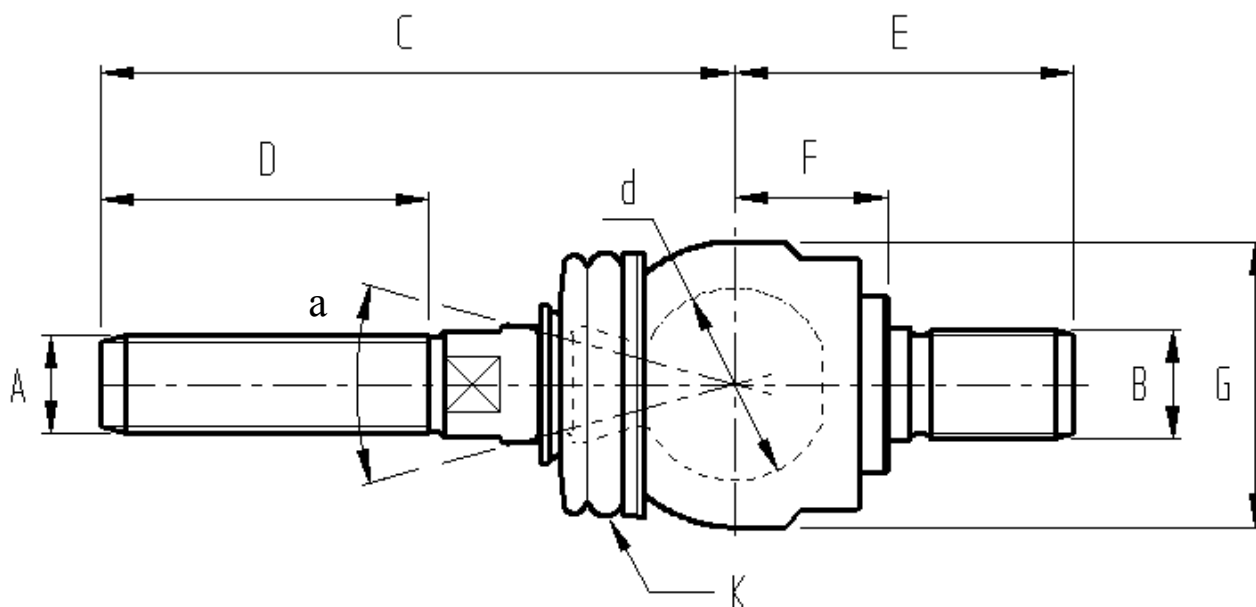
RIF. FRAP	1605	1239	1604	1768	1612
<b>dx</b>	28x30°	28x30°	28x30°	28x34°	28x50°
<b>A</b>	18x1,5	18x1,5	18x1,5	16x1,5	18x1,5
<b>B</b>	16x1,5	16x1,5	20x1,5	14x1,5	20x1,5
<b>C</b>	154	123	154	80	154
<b>D</b>	60	60	60	35	60
<b>E</b>	56	49	57	45	57
<b>F</b>	24	24	23	24	23
<b>G</b>	41	41	41	41	41
<b>K</b>	cuffia / dust cover	cuffia / dust cover	cuffia / dust cover	cuffia / dust cover	cuffia / dust cover
-					
-					
-					
<b>RIF. FRAP</b> Snodo fil sinistro Left hand thread					



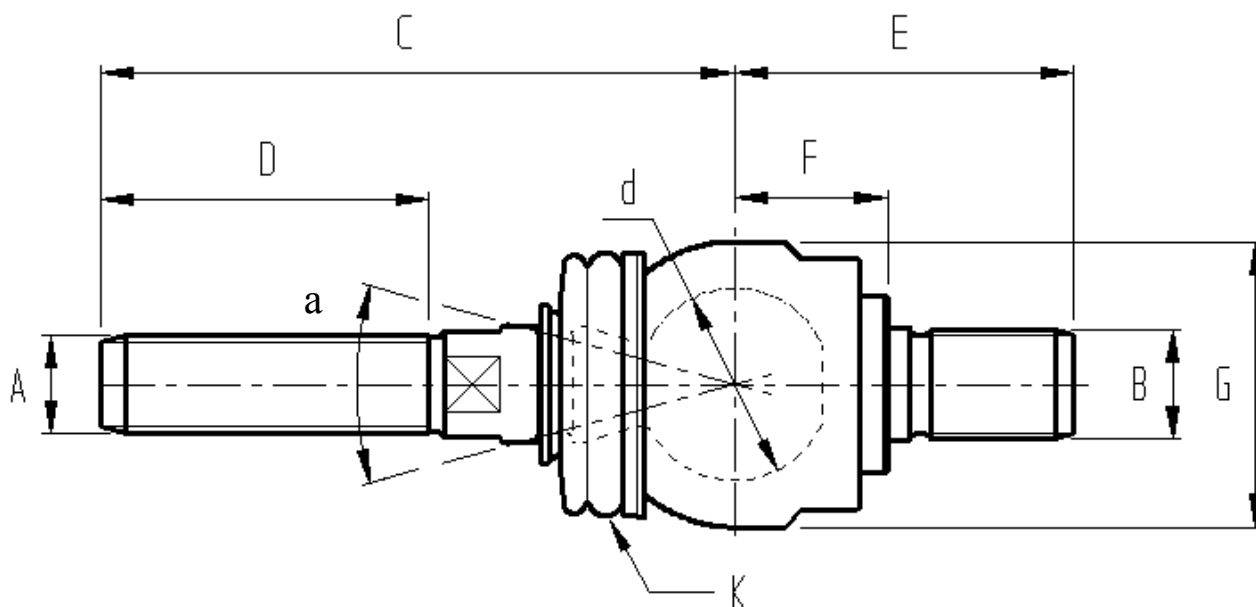
RIF. FRAP	1063	1978	1610	1611	1674
<b>dxα</b>	28x52°	32x42°	32x48°	32x48°	32x48°
<b>A</b>	16x1,5	16x1,5	18x1,5	18x1,5	18x1,5
<b>B</b>	16x1,5	16x1,5	20x1,5	20x1,5	20x1,5
<b>C</b>	377	72	150	116	105
<b>D</b>	70	35	60	60	49
<b>E</b>	34	52	61	61	61
<b>F</b>	22	27	27	27	27
<b>G</b>	41	47	47	47	47
<b>K</b>	-	cuffia / dust cover	cuffia / dust cover	cuffia / dust cover	cuffia / dust cover
-					
-					
-					
<b>RIF. FRAP</b> Snodo fil sinistro Left hand thread					A=18x1,5 S/L



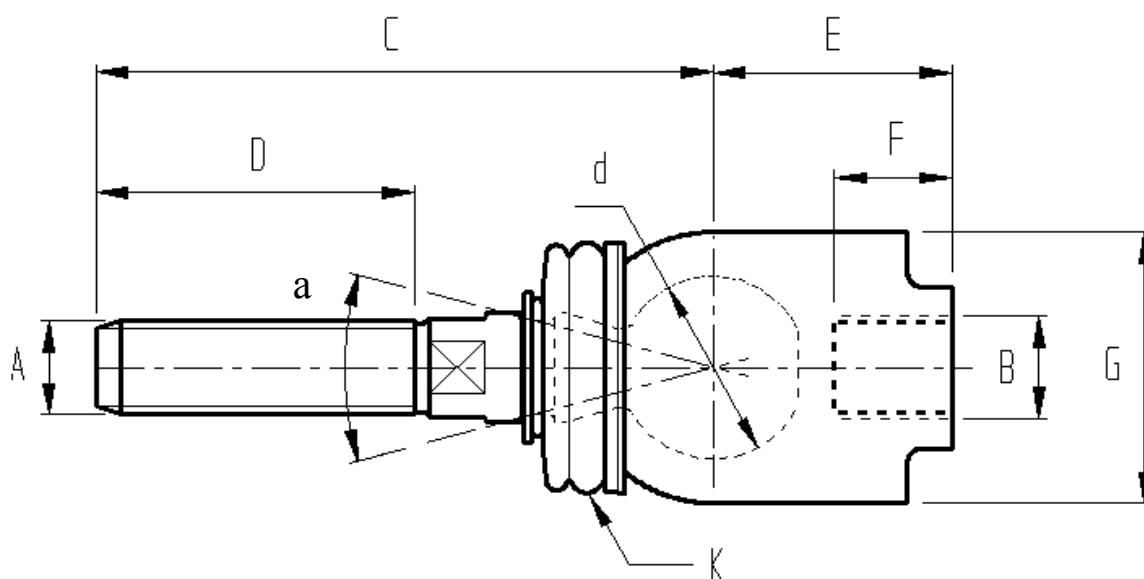
RIF. FRAP	2201	1669	2819	2855	2857
<b>dx</b>	35x30°	35x30°	35x35°	35x40°	35x40°
<b>A</b>	18x1,5	18x1,5	18x1,5	18x1,5	18x1,5
<b>B</b>	20x1,5	20x1,5	22x1,5	20x1,5	20x1,5
<b>C</b>	116	116	144	80	144
<b>D</b>	60	60	65	37	80
<b>E</b>	62	62	68	62	62
<b>F</b>	28	28	32	28	28
<b>G</b>	52	52	52	52	52
<b>K</b>	cuffia / dust cover	cuffia / dust cover	cuffia / dust cover	cuffia / dust cover	cuffia / dust cover
-					
-					
-					
<b>RIF. FRAP</b> Snodo fil sinistro Left hand thread	<b>2203</b>				



RIF. FRAP	2872	2855	2129	2114	2089
<b>dx</b>	35x40°	35x42°	35x48°	40x34°	40x40°
<b>A</b>	18x1,5	18x1,5	18x1,5	18x1,5	22x1,5
<b>B</b>	20x1,5	20x1,5	20x1,5	18x1,5	22x1,5
<b>C</b>	129	80	116	116	144
<b>D</b>	65	37	60	52	78
<b>E</b>	62	62	62	68	70
<b>F</b>	28	28	28	32	32
<b>G</b>	52	52	52	56	56
<b>K</b>	cuffia / dust cover	cuffia / dust cover	cuffia / dust cover	cuffia / dust cover	cuffia / dust cover
-					
-					
-					
<b>RIF. FRAP</b> Snodo fil sinistro Left hand thread					

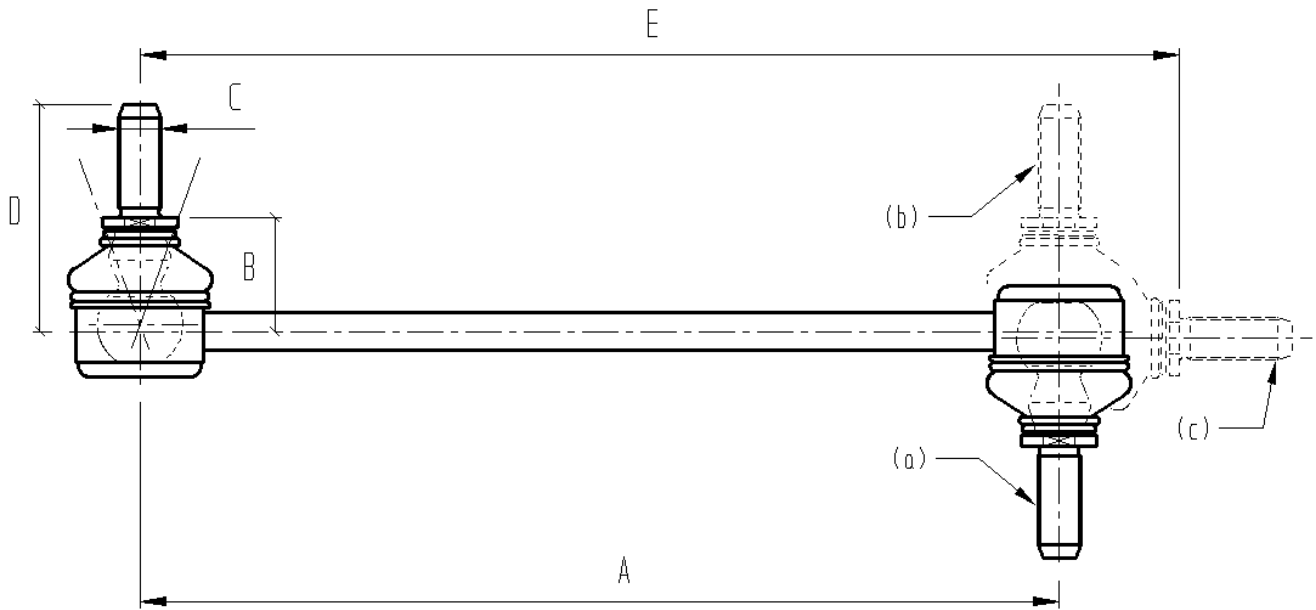


RIF. FRAP	2149	2205	2440	...	
<b>dx</b>	40x40°	50x25°	50x25°		
<b>A</b>	24x1,5	28x1,5	30x1,5		
<b>B</b>	22x1,5	26x1,5	30x1,5		
<b>C</b>	144	158	158		
<b>D</b>	80	92	92		
<b>E</b>	70	83	95		
<b>F</b>	32	38	38		
<b>G</b>	56	68	68		
<b>K</b>	cuffia / dust cover	cuffia / dust cover	cuffia / dust cover		
-					
-					
-					
<b>RIF. FRAP</b> Snodo fil sinistro Left hand thread					



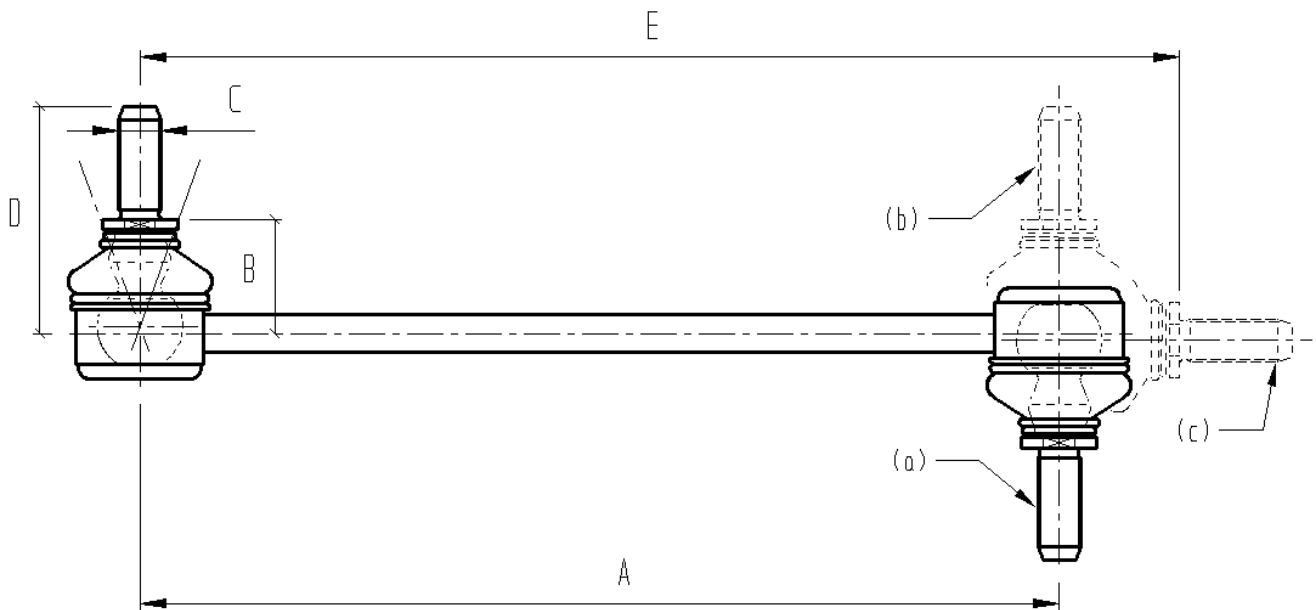
RIF. FRAP	851	2136	1157	1034	820
<b>dxα</b>	25x55°	25x55°	25x55°	25x55°	28x50°
<b>A</b>	12x1,5	12x1,25	14x1,5	14x1,5	16x1,5
<b>B</b>	14x1,5	14x1,5	22x1,5	22x1,5	16x1,5
<b>C</b>	248	65	342	326	255
<b>D</b>	50	40	48	51	55
<b>E</b>	32	36	40	40	34
<b>F</b>	14	20	22	22	15
<b>G</b>	37	37	37	37	41
<b>K</b>	-	-	-	-	-
-					
-					
-					
<b>RIF. FRAP</b> Snodo fil sinistro Left hand thread					

# FRAP *Tiranti barra antirollio - Stabilizer links*



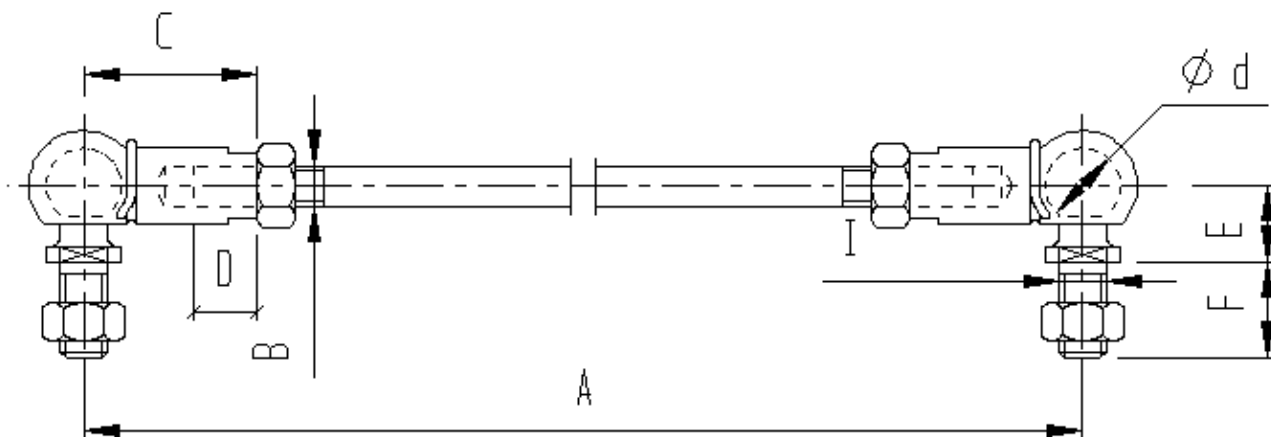
RIF. FRAP	2217	1790	1791	2212	2093
<b>A</b>	125	225	240	245	275
<b>B</b>	26,5	26,5	20,5	24,5	26,5
<b>C</b>	10x1,5	12x1,5	10x1,5	12x1,5	10x1,5
<b>D</b>	48	48	38	48	53
<b>E</b>	-	-	-	-	-
<b>(a)</b>	*	-	*	*	*
<b>(b)</b>	-	*	-	-	-
<b>(c)</b>	-	-	-	-	-
-					
-					
-					
-					

# FRAP *Tiranti barra antirollio - Stabilizer links*

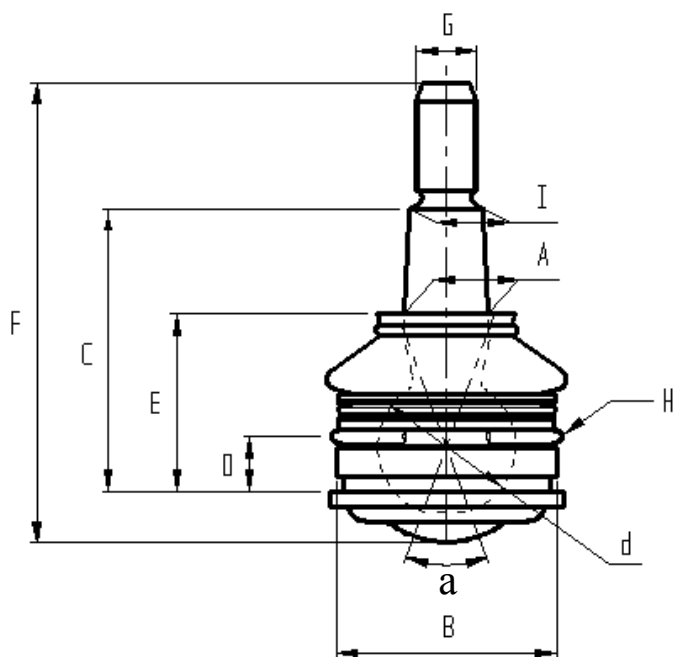


RIF. FRAP	1876	2219	2214	2215	2216
<b>A</b>	300	300	335	300	345
<b>B</b>	26,5	26,5	22,5	24	24
<b>C</b>	10x1,5	10x1,5	10x1,5	12x2	10x1,5
<b>D</b>	53	48	48	53	45
<b>E</b>	-	-	-	325	360
<b>(a)</b>	*	*	-	-	-
<b>(b)</b>	-	-	*	-	-
<b>(c)</b>	-	-	-	*	*
-					
-					
-					
-					

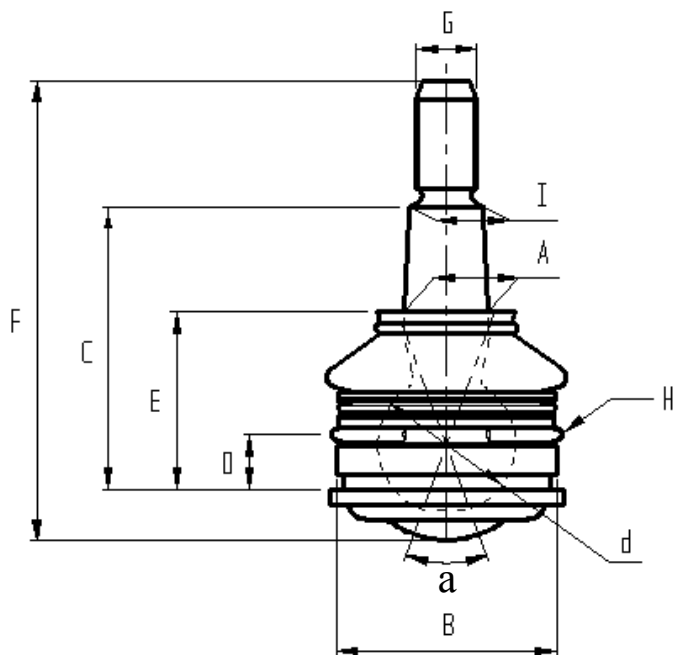




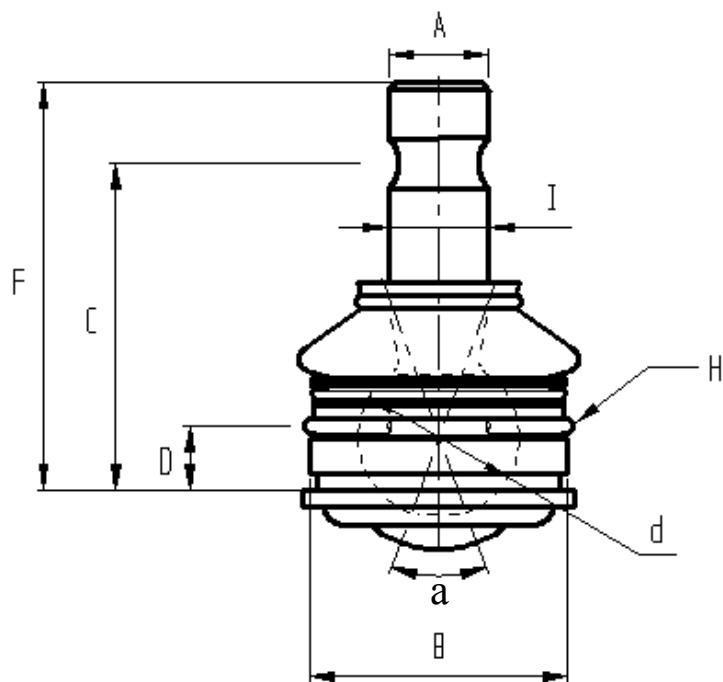
RIF. FRAP	TM537	TM...	TM...	TM...	...
<b>d</b>	13	13	16	19	
<b>A</b>	205	a richiesta-on request	a richiesta-on request	a richiesta-on request	
<b>B</b>	8x1,25	8x1,25	10x1,5	14x1,5	
<b>C</b>	30	30	35	45	
<b>D</b>	14	14	15,5	21,5	
<b>E</b>	13	13	16	20	
<b>F</b>	16,5	16,5	20	28	
<b>I</b>	8	8	10	14	
<b>snodo FRAP</b>	<b>2243</b>	<b>2243</b>	<b>2511</b>	<b>2512</b>	
<b>FRAP joint</b>	<b>2243</b>	<b>2243</b>	<b>2511</b>	<b>2512</b>	
-					
-					



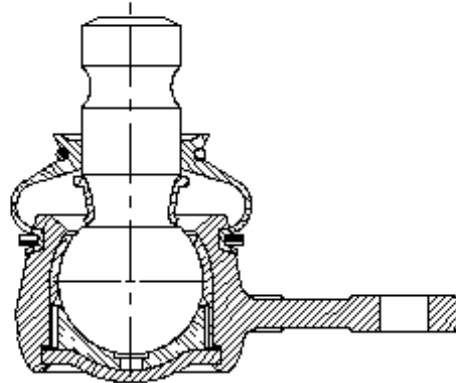
RIF. FRAP	2817	2874	2439	2870	3089
<b>dxα</b>	20x52°	20x58°	22x58°	22x58°	22x58°
<b>A</b>	13,2 / 1:8	13,2 / 1:8	13,5 / 1:8	13,5 / 1:8	13,9 / 1:6
<b>B</b>	32,5	36x1,5	38x1,5	35,5	35,5
<b>C</b>	43	40	41	42,5	41,5
<b>D</b>	13	-	-	12	12
<b>E</b>	31	28	27	28	29
<b>F</b>	66	66,5	65	65	66
<b>G</b>	10x1,25	10x1,25	10x1,25	10x1,25	10x1,25
<b>H</b>	*	-	-	*	*
<b>I</b>	11,7	11,7	11,7	11,7	11,9
-					
-					



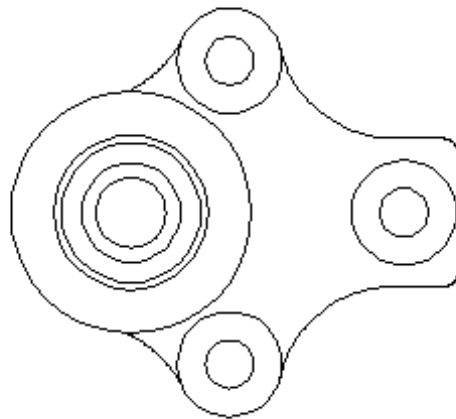
RIF. FRAP	2833	2873	738	1425	...
<b>dxα</b>	22x58°	22x58°	23x40°	25x46°	
<b>A</b>	14 / 1:8	16 / 1:6	14 / 1:10	18,5 / 1:6	
<b>B</b>	35,5	31	36,8	38,05	
<b>C</b>	43,5	45	47	52	
<b>D</b>	12	11	9	12,5	
<b>E</b>	28	31,5	28	31	
<b>F</b>	72	72	79	85	
<b>G</b>	12x1,5	12x1,5	10x1,25	14x1,5	
<b>H</b>	*	*	*	*	
<b>I</b>	12,5	13,7	12,25	14,95	
-					
-					



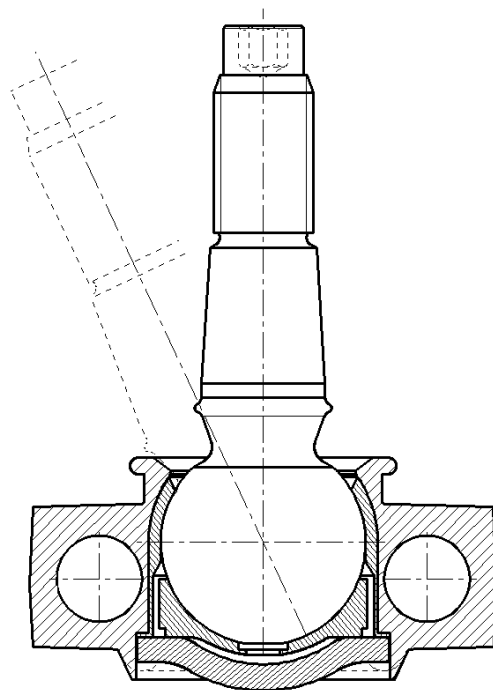
RIF. FRAP	1273	2609	2668	965	...
<b>dx</b>	23x38°	25x52°	25x58°	35x35°	
<b>A</b>	16	18	16	15	
<b>B</b>	36,9	38,5	38,5	46,3	
<b>C</b>	40	42	42	52	
<b>D</b>	-	-	-	-	
<b>F</b>	59	52	52	75	
<b>H</b>	-	-	-	-	
<b>I</b>	16	18	16	15	
-					
-					
-					
-					



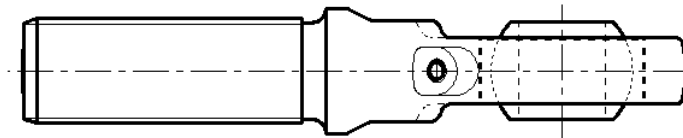
**Fig. 1a**



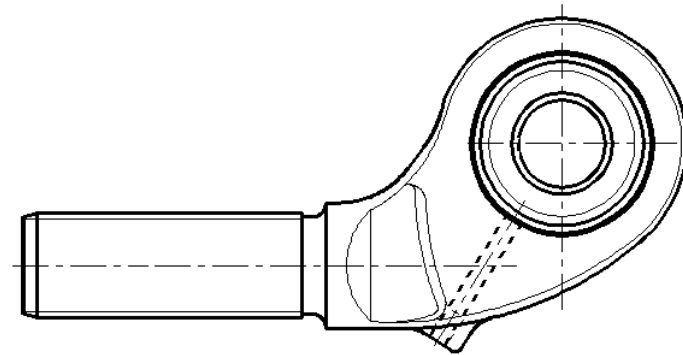
**Fig. 1b**



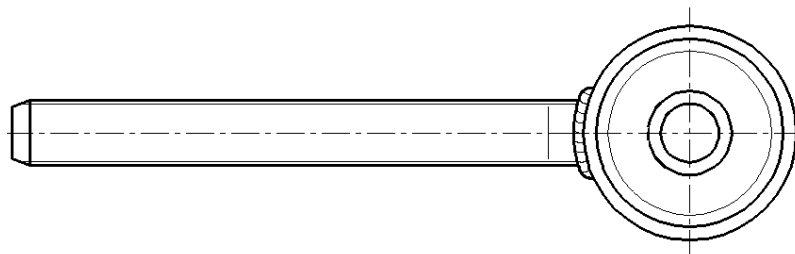
**Fig. 2**



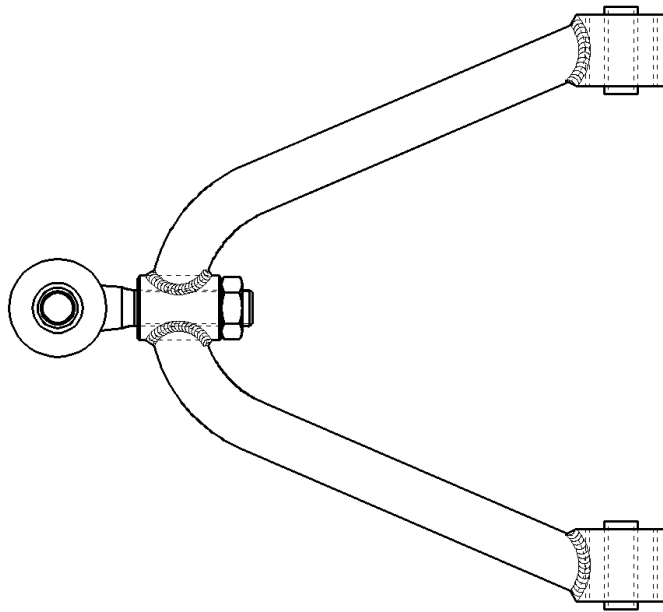
**Fig. 3a**



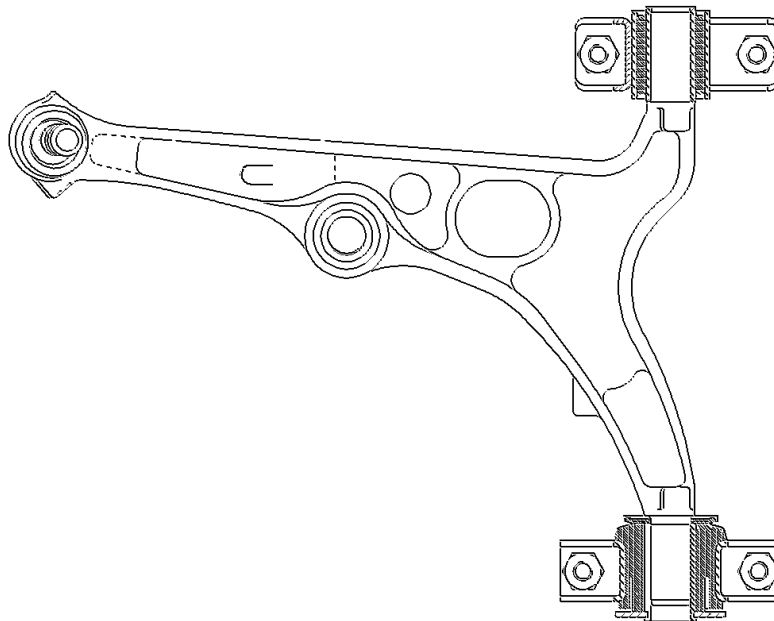
**Fig. 3b**



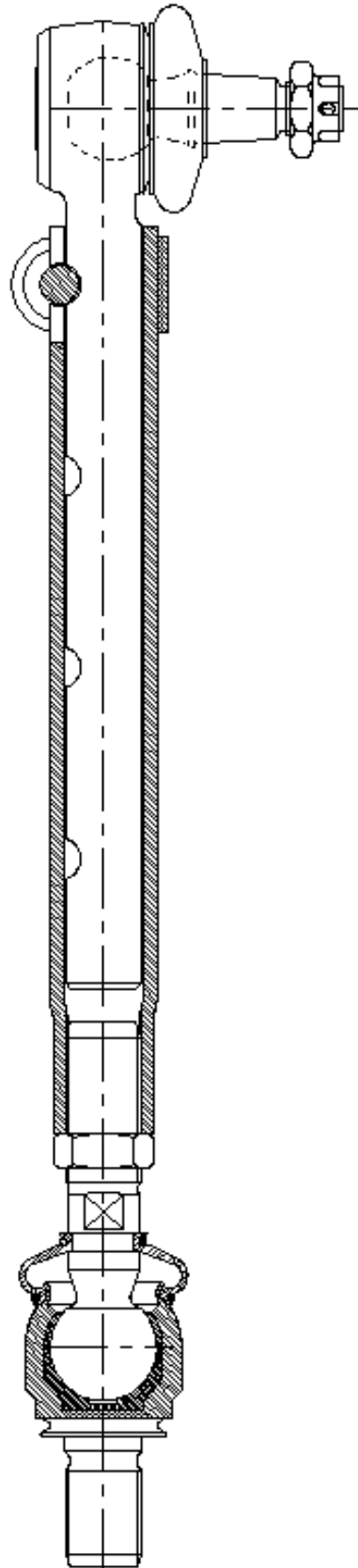
**Fig. 4**



**Fig. 5**



**Fig. 6**



**Fig. 7**

